

A2D-R & A6D-R Reducer Fuses

Time Delay/Class RK1

UL/CSA LISTED POWER FUSES

DECREASE YOUR CURRENT RATING
WITHOUT USING A FUSE REDUCER



The A2D-R and A6D-R Reducer Fuses are a safe, permanent solution for decreasing your current rating without using a Fuse Reducer accessory, which is designed for temporary use only. These special purpose UL Listed reduced rating Class RK1 fuses provide the same trusted protection levels as a traditional A2D-R and A6D-R Class RK1 fuses, but in a larger body.

FEATURES/BENEFITS

- Replaces traditional temporary-use only Fuse Reducer accessories
- Time delay for motor starting and transformer inrush currents without nuisance opening
- 600VAC and 600VDC dual rated
- 300kA interrupting rating - self-certified, UL witnessed tests
- Extremely current limiting for low peak let-thru current
- Recommended for Arc Flash energy reduction
- Easy 2-to-1 selectivity for prevention of nuisance shut downs and blackouts
- Rejection-style design prevents replacement errors (when used with recommended fuse blocks)
- High-visibility orange label gives instant brand recognition
- Reduced inventory by taking the place of lower-rated Class RK1 fuses and associated Fuse Reducer accessories
- Fiberglass body provides dimensional stability in harsh industrial settings

RATINGS

A2D-R

Volts: 250VAC/DC

Amps: 110 to 200A (in 400A body); 225 to 400A (in 600A body)

I.R.: 200kA I.R. AC, 100kA I.R. DC

A6D-R

Volts: 600VAC/DC

Amps: 30A (in 60A body)
20 to 60A (in 100A body)
60 to 100A (in 200A body)
110 to 200A (in 400A body)
225 to 400A (in 600A body)

I.R.: 200kA I.R. AC, 100kA I.R. DC (self-certified for 300kA I.R., UL witnessed)

APPLICATIONS

- Motors
- Safety switches
- Transformers
- Branch circuit protection
- Disconnects
- Control panels
- All general-purpose circuits

Note: See motor fuse applications tables in section AP

APPROVALS/STANDARDS

- UL Special Purpose Listed, UL file E60314
- DC listed to UL standard 248
- CSA certified to standard C22.2 No. 248.12



CATALOG NUMBERS (AMPS)

| 250V | 600V | Amp Rating | Body Size |
|-------------|--------------|------------|-----------|
| | A6D30/60RN | 30A | 60A |
| | A6D20/100RN | 20A | 100A |
| | A6D30/100RN | 30A | |
| | A6D60/100RN | 60A | |
| | A6D60/200RN | 60A | 200A |
| | A6D80/200RN | 80A | |
| | A6D100/200RN | 100A | |
| A2D110/400R | A6D110/400R | 110A | 400A |
| A2D125/400R | A6D125/400R | 125A | |
| A2D150/400R | A6D150/400R | 150A | |
| A2D175/400R | A6D175/400R | 175A | |
| A2D200/400R | A6D200/400R | 200A | |
| A2D225/600R | A6D225/600R | 225A | 600A |
| A2D250/600R | A6D250/600R | 250A | |
| A2D300/600R | A6D300/600R | 300A | |
| A2D350/600R | A6D350/600R | 350A | |
| A2D400/600R | A6D400/600R | 400A | |

N suffix = Non-indicating.
60A, 100A, and 200A body sizes non-indicating only.

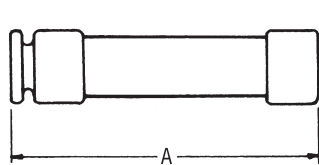
RECOMMENDED FUSE BLOCKS WITH BOX CONNECTORS FOR AMP-TRAP® CLASS RK1 FUSES

| Fuse Ampere Rating | Catalog Number | | 600V or less | |
|--------------------|------------------------|--------|--------------|--------|
| | 250V or less 1 Pole | 3 Pole | 1 Pole | 3 Pole |
| 0-30 | | | 60306R | 30308R |
| 31-60 | | | 20608R | 60608R |
| 61-100 | | | 61036R | 61038R |
| 101-200 | 22001R | 22003R | 62001R | 62003R |
| 201-400 | 24001R | 24003R | 64001R | 64003R |
| 401-600 | 2631R | 2633R | 6631R | 6633R |

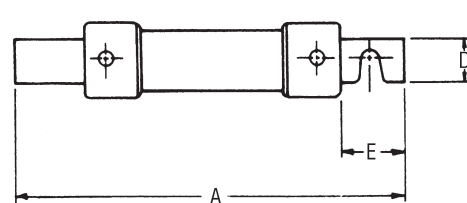
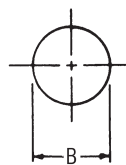
A variety of pole configurations and termination provisions are available. Refer to Section FB for details.

DIMENSIONS

| Ampere Rating | A | | B | | C | | D | | E | |
|-----------------|--------|-----|---------|----|------|----|-------|----|-------|----|
| | In | mm | In | mm | In | mm | In | mm | In | mm |
| 250V-A2D | | | | | | | | | | |
| 110/400-200/400 | 8-5/8 | 219 | 2-1/16 | 53 | 1/4 | 6 | 1-5/8 | 41 | 1-7/8 | 48 |
| 225/600-400/600 | 10-3/8 | 264 | 2-9/16 | 66 | 1/4 | 6 | 2 | 51 | 2-1/4 | 57 |
| 600V-A6D | | | | | | | | | | |
| 30/60 | 5-1/2 | 139 | 1-1/16 | 27 | - | - | - | - | - | - |
| 20/100-60/100 | 7-7/8 | 200 | 1-5/16 | 34 | 1/8 | 3 | 3/4 | 19 | 1 | 25 |
| 60/200-100/200 | 9-5/8 | 244 | 1-13/16 | 46 | 3/16 | 5 | 1-1/8 | 28 | 1-3/8 | 35 |
| 110/400-200/400 | 11-5/8 | 295 | 2-9/16 | 66 | 1/4 | 6 | 1-5/8 | 41 | 1-7/8 | 48 |
| 225/600-400/600 | 13-3/8 | 340 | 3-1/8 | 80 | 1/4 | 6 | 2 | 51 | 2-1/4 | 57 |



0-60A



20/100 - 400-600A

