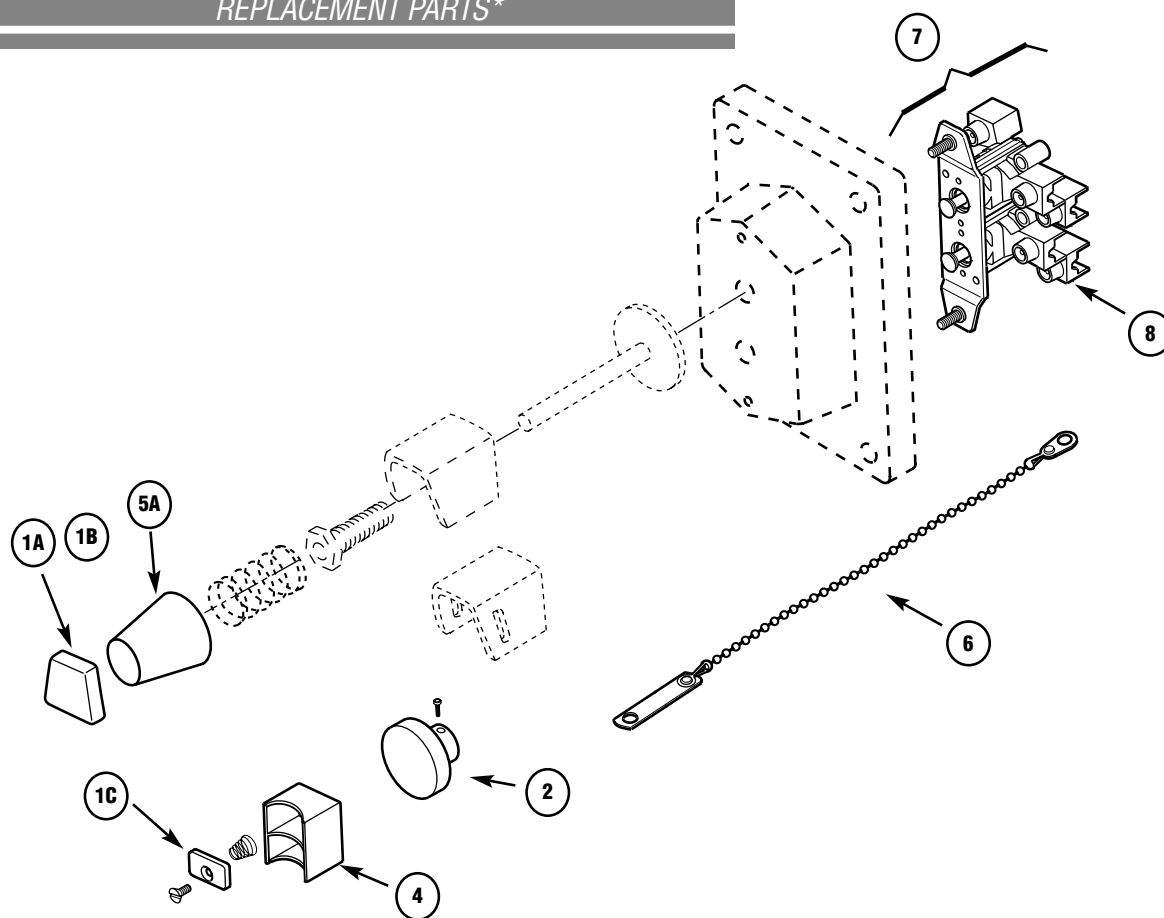


EDS/EFSDSD/DS (M90, M96) CONTROL STATIONS REPLACEMENT PARTS*



ITEM	DESCRIPTION	USED ON	PART NO.
FRONT-OPERATED PUSHBUTTON			
1A	EXTERNAL OPERATING BUTTON ONLY	ALL EDS/EFSDSD/DS EXCEPT DSD961 & DSD962 (M96)*	CF859-K1**
1B	EXTERNAL OPERATING BUTTON KIT	ALL EDS/EFSDSD/DS EXCEPT DSD961 & DSD962 (M96)*	CF859-K10
(Includes 10 buttons per kit pre-marked: START, STOP, ON, OFF, UP, DOWN, RESET, JOG, FORWARD AND REVERSE)			
1C	EXTERNAL OPERATING BUTTON ONLY	DSD961, DSD962 (M96)*	
	BLACK TOP		EMP:0208172-1**
	BLACK BOTTOM		EMP:0208172-2**
	GREEN TOP		EMP:0208172-3**
	GREEN BOTTOM		EMP:0208172-4**
	RED TOP		EMP:0208172-5**
	RED BOTTOM		EMP:0208172-6**

* Note: All replacement parts are for M96 only. Parts are not interchangeable with previous models.

** Specify Marking

EDS/EFSDSD/DS (M90, M96) CONTROL STATIONS
REPLACEMENT PARTS

ITEM	DESCRIPTION	USED ON	PART NO.
2	MUSHROOM "STOP" BUTTON (w/ hardware—red only)	ALL EDS/EFSDSD/DS W/ S111 OR S769 SUFFIX (M96)*	EMP-K2
3	LOCKOUT "EARS" (Qty. 2) & BUTTON BASE FOR MAINTAINED MUSHROOM HEAD (Including hardware—not shown)	ALL EDS/EFSDSD/DS W/ S769 SUFFIX (M96)*	DS:0205424-3
4	GUARD FOR EXTERNAL OPERATING BUTTON	DSD961, DSD962 (M96)*	DS:0207824
5A	WEATHERPROOF BOOT, MODEL M96	ALL EDS/EFSDSD/DS EXCEPT DSD962 (M96)*	DS:0208029
5B	WEATHERPROOF COVER AND CLAMPING RING FOR FRONT OPERATING PUSHBUTTON MODEL M90 – S323 (Not shown)	ALL EDS/DS W/ S323 SUFFIX (M90)	DS:17063A
6	LOCKOUT BAR AND CHAIN ASSEMBLY – S153	ALL EDS/EFSDSD/DS WITH S153 SUFFIX	DS:14606A
7	REPLACEMENT PUSHBUTTON SWITCH ASSEMBLY (Includes mounting strap)	1-CIRCUIT UNIVERSAL 2-CIRCUIT UNIVERSAL 3-CIRCUIT UNIVERSAL	ED11 ED12 ED13 (Used only on DSD962)
8	REPLACEMENT CONTACT BLOCK ONLY	ALL EDS/EFSDSD	ESWP126
9	COVER SCREW PACK (4/pack)	ALL MODELS	DSD SCREWPACK
* Note: All replacement parts are for M96 only. Parts are not interchangeable with previous models.			