

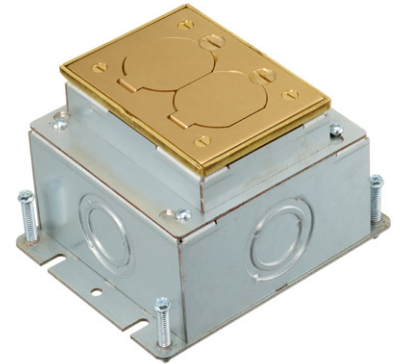
# Rectangular Stamped Steel Floor Boxes

We offer six different styles of rectangular concrete stamped steel floor boxes, satisfying the requirements of almost any commercial building application. These traditional solutions include sheet metal box construction typically used in second floor concrete pours and above. The boxes can be finished with either brass or aluminum covers and flanges for several floor finishes including finished concrete, tile, VCT, wood, and carpet. They can also be finished with nonmetallic covers and flanges in four colors for carpet applications. All Hubbell floor box assemblies exceed UL Scrubwater exclusion requirements.

## Features and Benefits

### Box

- Sheet metal floor boxes include 16 gauge galvanized sheet metal bases and adjustable tops
- Concentric knockouts for sides and bottom conduit entry; 1/2", 3/4", 1", and 1-1/4"
- 2.75" or 3.75" minimum depth of pour
- Pre-pour and post-pour adjustment
- 2 and 3-gang floor boxes include removable metallic low voltage dividers
- Disposable nonmetallic cover flange spacers






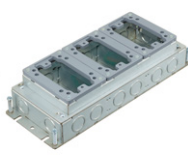


### Cover and Flanges

- Available in metallic: brushed brass and brushed aluminum
- Available in nonmetallic: black, brown, gray, and ivory
- Cover adapter rings are purchased separately for tile or finished concrete flush applications
- Carpet flanges are purchased separately for carpet and surface applications
- Metallic covers and flanges have 2,000 lbs. static load rating with 2x safety factor
- Nonmetallic covers and flanges have 300 lbs. static load rating
- Listed to UL 514A and UL Scrubwater compliant
- All covers are ADA compliant



## Rectangular Flush Floor Boxes


Type	Stamped Steel					
Style	1-Gang Deep	3-Gang Deep	3-Gang Deep	1-Gang Shallow	2-Gang Shallow	3-Gang Shallow
						
Catalog Numbers	<b>FB2431*</b>	<b>FB2432</b>	<b>FB2433</b>	<b>FB2421*</b>	<b>FB2422</b>	<b>FB2423</b>
Cover Frame Material	Thermoplastic	Thermoplastic	Thermoplastic	Thermoplastic	Thermoplastic	Thermoplastic
Cover Frame Material	3.75" (95.3)	3.00" (76.2)	3.75" (95.3)	2.75" (69.9)	2.75" (69.9)	2.75" (69.9)
Post Pour Adjustment	.50" (12.7)	.50" (12.7)	.50" (12.7)	.50" (12.7)	.50" (12.7)	.50" (12.7)

\*Suitable for single service applications only.



## Flush Rectangular Covers Flanges

### Required components for flush tile or finished concrete applications

Brass	<b>S5017GR</b>		Adapter frame with ground wire (one required per gang) Dim. 4.36" x 3.20" x 0.30"
Aluminum	<b>SA5017GR</b>		

## Flat Flanges\*

### Flat Flange Heights 0.125"

Number of Gangs	1-Gang	2-Gang	3-Gang
Dimensions	6.00" x 4.85"	6.00" x 8.13"	6.00" x 11.34"
Brass, square edge	<b>SB3083W</b>	<b>SB3084W</b>	<b>SB3085W</b>
Aluminum, square edge	<b>SA3083W</b>	<b>SA3084W</b>	<b>SA3085W</b>
Brass, beveled edge	<b>SB3083WB</b>	<b>SB3084WB</b>	<b>SB3085WB</b>
Aluminum, beveled edge	<b>SA3083WB</b>	<b>SA3084WB</b>	<b>SA3085WB</b>

\*Flange applications: square edge for carpet and recessed, beveled for use on hard finished surfaces

## Covers – One Required per Gang

Brass	<b>S3825</b>	<b>S3625</b>	<b>S3625TR</b>	<b>S3826</b>	<b>S2425</b>	<b>S2625</b>	<b>S2825</b>	<b>S3425</b>	<b>S3813</b>
Aluminum	<b>SA3825</b>	<b>SA3625</b>	<b>SA3625TR</b>	<b>SA3826</b>	<b>SA2425</b>	<b>SA2625</b>	-	-	<b>SA3813</b>
Dimensions	4.16" x 2.99"								
									
	Duplex Flap	Duplex Screw	Tamper Resistant Duplex Screw	Style Line® Decorator Opening	2 1/8" x 3/4" Combination	2 1/8" x 1" Combination	2 1/8" Single Receptacle	2 1/8" Single Receptacle	Blank

Cover load rating: metallic covers and flanges 2,000 lbs. with 2x safety factors, nonmetallic covers and flanges 300 lbs. Load applied through a 3 in. (.76) mandrel at the center of the cover.

## Flush Rectangular Nonmetallic Covers and Flanges\*

### Required components for carpet applications

### Cover with duplex and Style Line® decorator inserts included

#### Carpet Flanges

Number of Gangs	1-Gang	2-Gang	3-Gang	One Required per Gang
Dimensions	6.00" x 4.88"	6.00" x 8.13"	6.00" x 11.35"	4.15" x 2.97"
Black	<b>MFBRFBL1</b>	<b>MFBRFBL2</b>	<b>MFBRFBL3</b>	<b>PFBR826BLA</b>
Brown	<b>MFBRFBR1</b>	<b>MFBRFBR2</b>	<b>MFBRFBR3</b>	<b>PFBR826BRA</b>
Gray	<b>MFBRFGY1</b>	<b>MFBRFGY2</b>	<b>MFBRFGY3</b>	<b>PFBR826GYA</b>
Ivory	<b>MFBRFI1</b>	<b>MFBRFI2</b>	<b>MFBRFI3</b>	<b>PFBR826IA</b>



Cover

Duplex Insert

Style Line® Decorator Insert

Note: \*Flush rectangular nonmetallic covers and flanges are UL listed only. Not CSA certified. Cover load rating: nonmetallic covers and flanges 300 lbs. Load applied through a 3 in. (.76) mandrel at the center of the cover.



A proud member of the Hubbell family.

hubbell.com/wiringdevice-kellems | 40 Waterview Drive, Shelton, CT 06484 | 800-288-6000

©2023 Hubbell Incorporated. All rights reserved. Hubbell and the Hubbell logo are registered trademarks or trademarks of Hubbell Incorporated. All other trademarks are the property of their respective owners.

EP-WDK-SF-EN-01534 | 12/2023