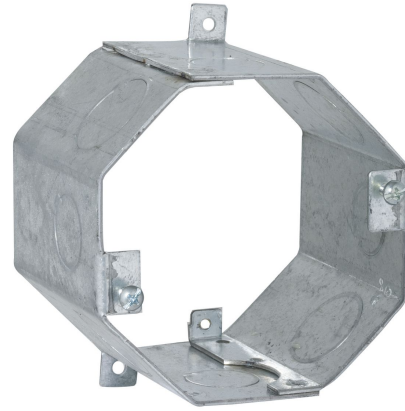




Concrete Ring, Welded, 3 in. Deep, Single Row 1/2 & 3/4 in. KO's

By RACO
Catalog # 272

Concrete Ring, Welded, 3 in. Deep, Single Row 1/2 & 3/4 in. KO's



Features

- Single row of 1/2 in. and 3/4 in. knockouts
- Flat sides provide excellent contact for locknuts
- External ears are used to nail the concrete ring to the wood form
- Top cover is removable for before-pour work
- Waxed fixture ears prevent concrete from interfering with the threads
- Ears on inside of concrete ring are for fixtures
- Support a light fixture up to 50 pounds
- 37.0 cu. in. capacity

Specifications

Certified Listed	UL Listed
Buy American Compliant	No
EU RoHS Indicator	Contact Manufacturer

Configuration

Knockouts	<ul style="list-style-type: none"> • 1/2 in • 3/4 in
-----------	--

Dimensions

Cubic Capacity	37.0 cu.in
----------------	------------

Fixture Lbs.	50 lb.
Depth	3 in
Width	4 in
Weight	0.786 lb.
Height	4 in

General

Wiring System	Conduit
Color	Gray
Type	Concrete Ring
Material	Steel
Drawn or Welded	Welded
UPC	050169002728

Logistics

Packaging Type	No Packaging
Carton Quantity	25
Pallet Quantity	1125

Product Assets

- [Catalog \[English\]](#)
- [Catalog \[English\]](#)
- [Catalog Page \[English\]](#)
- [Customer Drawing \[English\]](#)