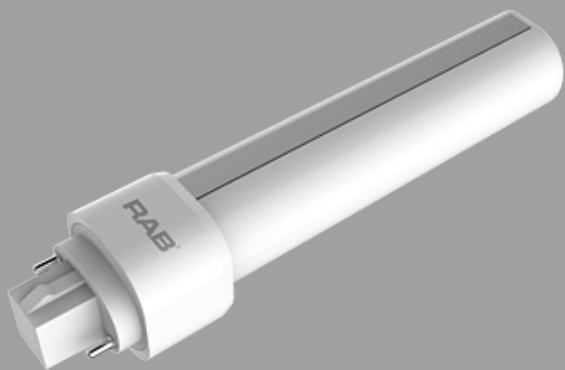


Project:

Type:

Prepared By:

Date:



UPC: 019813751535

Features and Benefits

- Replaces 18W/26W/32W G24d & G24q CFL Lamps
- Ballast Bypass. Integral Driver enables lamp to be wired directly to line voltage without need for an external driver or ballast
- Compatible with G24d / GX24d & G24q / GX24q installations
- 50,000 hour Lifespan
- Environmentally friendly, no mercury used
- UL Classified
- Rated for use in enclosed and open fixtures in dry or damp locations
- Non-Dimmable
- 5 Year No Compromise Warranty

Technical Specifications

Performance

Product Type:  
Compact

Input Wattage:  
9W

Wattage Equivalency:  
26W Fluorescent

Lumens:  
1,000lm

Efficacy:  
111lm/W

L70 Lifespan:  
50,000 Hours

Construction

Bulb Shape:  
PLC

Finish:  
Frosted

For Use Outdoors in Open Fixtures:  
No

LED Characteristics  
Color Temperature:  
4000K Cool White

Color Accuracy (CRI):  
82 CRI

Installation  
Base Type:  
G24d

Installation Type:  
Type B, Ballast Bypass

Installation Orientation:  
Horizontal

Electrical  
THD:  
<20%

Power Factor:  
0.9

Operating Temperature:  
-20°C to 45°C (-4°F to 113°F)

Dimmable:  
No

Input Voltage:  
120-277V AC

Operating Frequency:  
50/60Hz

Other

Warranty:  
RAB warrants that our LED products will be free from defects in materials and workmanship for a period of five (5) years from the date of delivery to the end user, including coverage of light output, color stability, driver performance and fixture finish. RAB's warranty is subject to all terms and conditions found at [rablighting.com/warranty](http://rablighting.com/warranty).

Compliance  
UL Recognized:  
Yes

## Technical Specifications (continued)

### UL Classified:

Yes

### California Energy Commission (CEC) Status:

Lawful for Sales in California

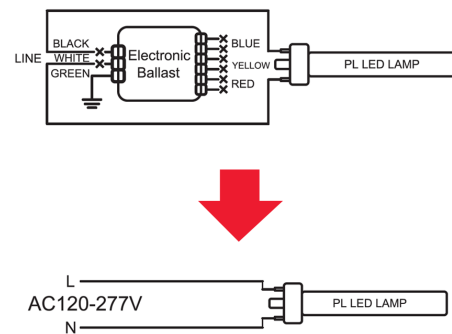
### Application:

Suitable for damp locations and totally enclosed fixtures.

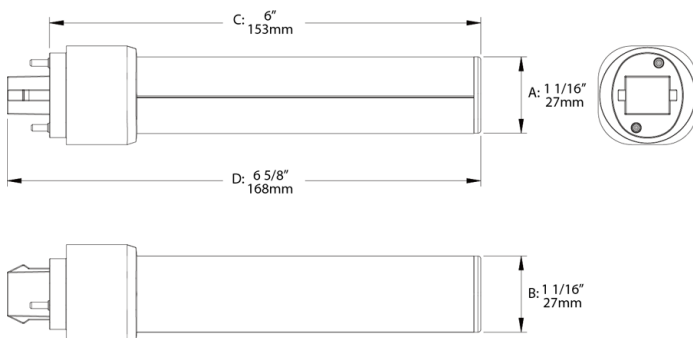
## Case and Pallet Dimensions

|        | QTY  | LENGTH (in) | WIDTH (in) | HEIGHT (in) |
|--------|------|-------------|------------|-------------|
| CASE   | 12   | 6.5         | 4.9        | 7           |
| PALLET | 4032 | 47.2        | 39.4       | 49.6        |

## Wiring Diagram



## Dimension



## Light Distribution

