

# Product data sheet

Specifications



Safety switch, general duty, non fusible, 3 pole, 3 wire, 240VAC, 60A, Type 1

DU322

Product availability: Stock - Normally stocked in distribution facility

## Main

Product	Single Throw Safety Switch
Duty Rating	General duty
Device Application	Residential
Disconnect Type	Non-fusible disconnect switch
Factory Installed Neutral	None
Number of Poles	3
Current Rating	60 A
Voltage Rating	240 V AC
Enclosure Rating NEMA	NEMA 1
Motor power hp	10 hp at 240 V AC 60 Hz for 1 phase motors 15 hp at 240 V AC 60 Hz for 3 phase motors

## Complementary

Mounting Type	Surface
Electrical Connection	Lugs
Wiring configuration	3-wire
Wire Size	AWG 12...AWG 3 aluminium AWG 14...AWG 3 copper
Tightening torque	35 lbf.in (4.0 N.m) 0.003...0.008 in² (2.08...5.26 mm²) (AWG 14...AWG 10) 35 lbf.in (4.0 N.m) (AWG 14...AWG 10) 45 lbf.in (5.08 N.m) 0.01 in² (8.37 mm²) (AWG 8) 45 lbf.in (5.08 N.m) 0.02...0.03 in² (12.3...21.12 mm²) (AWG 6...AWG 4) 50 lbf.in (5.6 N.m) 0.04 in² (26.67 mm²) (AWG 3)
Depth	3.63 in (92.20 mm)
Width	7.25 in (184.15 mm)
Height	9.25 in (234.95 mm)
Net Weight	19.8 lb(US) (9 kg)

## Environment

Certifications	UL listed file E2875
----------------	----------------------

## Ordering and shipping details

Category	US1DE1A00006
Discount Schedule	DE1A
GTIN	785901491743

Price is "List Price" and may be subject to a trade discount – check with your local distributor or retailer for actual price.

Disclaimer: This documentation is not intended as a substitute for and is not to be used for determining suitability or reliability of these products for specific user applications

Returnability	Yes
Country of origin	MX

## Packing Units

Unit Type of Package 1	PCE
Nbr. of units in pkg.	1
Package 1 Height	5.200 in (13.208 cm)
Package 1 Width	6.800 in (17.272 cm)
Package 1 Length	9.300 in (23.622 cm)
Package weight(Lbs)	4.239 lb(US) (1.923 kg)
Unit Type of Package 2	CAR
Number of Units in Package 2	5
Package 2 Height	10.000 in (25.400 cm)
Package 2 Width	8.100 in (20.574 cm)
Package 2 Length	19.000 in (48.260 cm)
Package 2 Weight	23.0008 lb(US) (10.433 kg)
Unit Type of Package 3	PAL
Number of Units in Package 3	150
Package 3 Height	40.000 in (101.600 cm)
Package 3 Width	40.000 in (101.600 cm)
Package 3 Length	48.000 in (121.920 cm)
Package 3 Weight	689.999 lb(US) (312.978 kg)


## Contractual warranty

Warranty	18 months
----------	-----------


Schneider Electric aims to achieve Net Zero status by 2050 through supply chain partnerships, lower impact materials, and circularity via our ongoing “Use Better, Use Longer, Use Again” campaign to extend product lifetimes and recyclability.

[Environmental Data explained >](#)


[How we assess product sustainability >](#)

<div>Environmental footprint</div>	
Environmental Disclosure	<a href="#">Product Environmental Profile</a>

Use Better

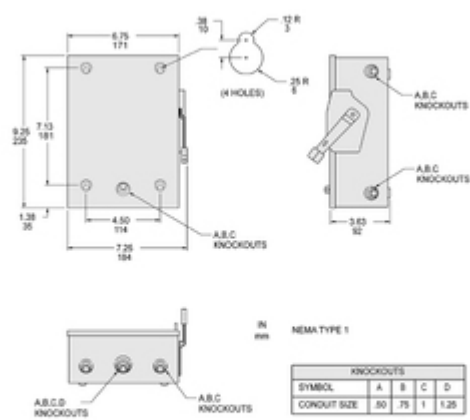
<div>Materials and Substances</div>	
Packaging made with recycled cardboard	Yes
Packaging without single use plastic	Yes
<a href="#">EU RoHS Directive</a>	Compliant
REACH Regulation	<a href="#">REACH Declaration</a>
California proposition 65	WARNING: This product can expose you to chemicals including: Lead and lead compounds, which is known to the State of California to cause cancer and birth defects or other reproductive harm. For more information go to <a href="http://www.P65Warnings.ca.gov">www.P65Warnings.ca.gov</a>
PVC free	Yes

Use Again

<div>Repack and remanufacture</div>	
Circularity Profile	No need of specific recycling operations
Take-back	No

Technical Illustration

Dimensions



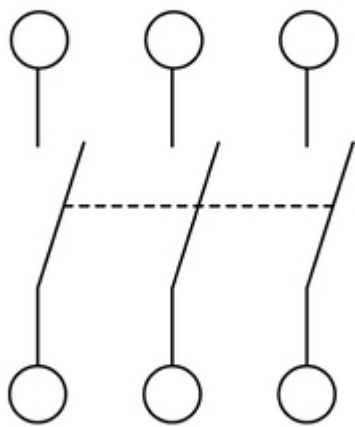
ALL DIMENSIONS ARE APPROXIMATE  
REFER TO TECHNICAL DRAWINGS AND DOCUMENTATION

Technical Illustration

Wiring diagram

---

NOT FUSIBLE



DU322

Image of product / Alternate images

Alternative

---

