

A2D-R & A6D-R Reducer Fuses

Time Delay/Class RK1

UL/CSA LISTED POWER FUSES

DECREASE YOUR CURRENT RATING
WITHOUT USING A FUSE REDUCER



The A2D-R and A6D-R Reducer Fuses are a safe, permanent solution for decreasing your current rating without using a Fuse Reducer accessory, which is designed for temporary use only. These special purpose UL Listed reduced rating Class RK1 fuses provide the same trusted protection levels as a traditional A2D-R and A6D-R Class RK1 fuses, but in a larger body.

FEATURES/BENEFITS:

- Replaces traditional temporary-use only Fuse Reducer accessories
- Time-delay for motor starting and transformer inrush currents without nuisance opening
- 600VAC & 600VDC dual rated
- 300kA interrupting rating - self-certified, UL witnessed tests
- Extremely current-limiting for low peak let-thru current
- Recommended for Arc Flash energy reduction
- Easy 2-to-1 selectivity for prevention of nuisance shut downs and “black outs”
- Rejection-style design prevents replacement errors (when used with recommended fuse blocks)
- High-visibility orange label gives instant brand recognition
- Reduced inventory by taking the place of lower-rated Class RK1 fuses and associated Fuse Reducer accessories
- Fiberglass body provides dimensional stability in harsh industrial settings

RATINGS:

A2D-R

Volts: 250VAC/DC

Amps: 110 to 200A (in 400A body);
225 to 400A (in 600A body)

IR: 200kA I.R. AC,
100kA I.R. DC

A6D-R

Volts: 600VAC/DC

Amps: 30A (in 60A body)
20 to 60A (in 100A body)
60 to 100A (in 200A body)
110 to 200A (in 400A body)
225 to 400A (in 600A body)

IR: 200kA I.R. AC, 100kA I.R. DC
(Self-certified for 300kA I.R., UL witnessed.)

APPLICATIONS:

- Motors
- Safety switches
- Transformers
- Branch circuit protection
- Disconnects
- Control panels
- All general-purpose circuits

Note: See motor fuse applications tables in section AP

APPROVALS:

- UL Special Purpose Listed, UL file E60314
- DC listed to UL standard 248
- CSA certified to standard C22.2 No. 248.12



CATALOG NUMBERS (AMPS)

250V	600V	Amp Rating	Body Size
	A6D30/60RN	30A	60A
	A6D20/100RN	20A	100A
	A6D30/100RN	30A	
	A6D60/100RN	60A	
	A6D60/200RN	60A	
	A6D80/200RN	80A	200A
	A6D100/200RN	100A	
A2D110/400R	A6D110/400R	110A	400A
A2D125/400R	A6D125/400R	125A	
A2D150/400R	A6D150/400R	150A	
A2D175/400R	A6D175/400R	175A	
A2D200/400R	A6D200/400R	200A	
A2D225/600R	A6D225/600R	225A	
A2D250/600R	A6D250/600R	250A	
A2D300/600R	A6D300/600R	300A	
A2D350/600R	A6D350/600R	350A	
A2D400/600R	A6D400/600R	400A	

N suffix = Non-indicating.

60A, 100A, & 200A body sizes non-indicating only.

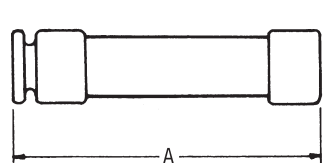
RECOMMENDED FUSE BLOCKS WITH BOX CONNECTORS FOR AMP-TRAP® CLASS RK1 FUSES

Fuse Ampere Rating	Catalog Number			
	250V or less		600V or less	
	1 Pole	3 Pole	1 Pole	3 Pole
0-30			60306R	30308R
31-60			20608R	60608R
61-100			61036R	61038R
101-200	22001R	22003R	62001R	62003R
201-400	24001R	24003R	64001R	64003R
401-600	2631R	2633R	6631R	6633R

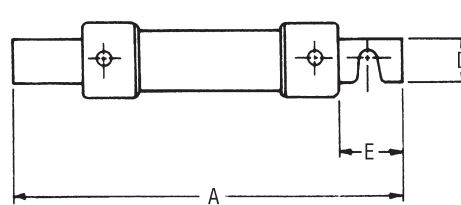
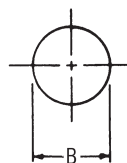
A variety of pole configurations and termination provisions are available. Refer to Section FB for details.

DIMENSIONS

Ampere Rating	A		B		C		D		E	
	In	mm	In	mm	In	mm	In	mm	In	mm
250V-A2D										
110/400-200/400	8-5/8	219	2-1/16	53	1/4	6	1-5/8	41	1-7/8	48
225/600-400/600	10-3/8	264	2-9/16	66	1/4	6	2	51	2-1/4	57
600V-A6D										
30/60	5-1/2	139	1-1/16	27	-	-	-	-	-	-
20/100-60/100	7-7/8	200	1-5/16	34	1/8	3	3/4	19	1	25
60/200-100/200	9-5/8	244	1-13/16	46	3/16	5	1-1/8	28	1-3/8	35
110/400-200/400	11-5/8	295	2-9/16	66	1/4	6	1-5/8	41	1-7/8	48
225/600-400/600	13-3/8	340	3-1/8	80	1/4	6	2	51	2-1/4	57



0-60A



20/100 - 400-600A

