

EFD manual motor starting switches and enclosures

Cl. I, Div. 1 & 2, Groups B^A, C, D
Cl. II, Div. 1, Groups E, F, G
Cl. II, Div. 2, Groups F, G
Cl. III
NEMA 3, 7B^ACD, 9EFG, 12

Explosionproof
Dust-ignitionproof
Raintight
Wet Locations

2C

Applications:

EFD manual motor starting and stopping switch enclosures are used:

- For manual starting of small AC or DC motors
- In locations made hazardous due to the presence of flammable vapors, gases or highly combustible dusts
- For installation at petroleum refineries, chemical and petrochemical plants and in other process industry facilities where similar hazards exist

Features:

- Enclosure is small and compact
- Accurately ground flange on both body and cover for flamtight joint
- Switch can be padlocked in either START or STOP positions
- Dead end (EFD) or through feed (EFDC) hubs in $\frac{3}{4}$ " to 1" size

Certifications and compliances:

NEC/CEC:

- Class I, Division 1 & 2, Groups B^A, C, D
- Class II, Division 1, Groups E, F, G
- Class II, Division 2, Groups F, G
- Class III

UL standard:

- UL1203

CSA standard:

- C22.2 No. 30

Environmental ratings:

- NEMA 3, 7B^ACD, 9EFG, 12

Standard materials:

- Bodies and covers – Feraloy iron alloy
- Operating handle – type 6/6 nylon
- Operating shaft – stainless steel

Standard finishes:

- Feraloy iron alloy – electrogalvanized and aluminum acrylic paint
- Type 6/6 nylon – natural (black)
- Stainless steel – natural

Options:

Description

- For use in Group B hazardous areas

Suffix

GB^A



EFD dead end



EFDC through feed

Electrical ratings:

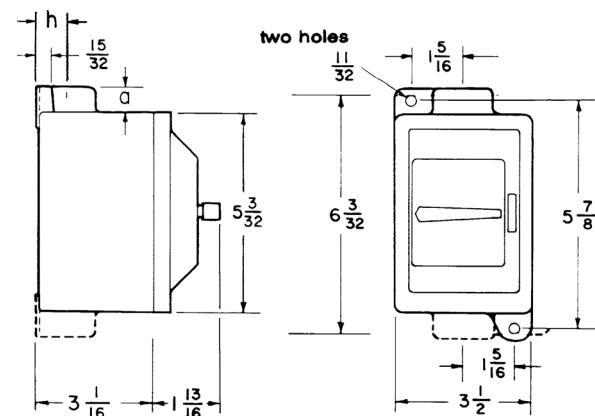
(Without overload protection; with switches)

No. of poles	Type	Switch rating amperage	Horsepower		
2	Square D Class 2510 Type KO-1	30A, 250 VAC; 20A, 600 VAC	115 VAC, 1 HP	230 VAC, 2 HP	460-575 VAC, 3 HP
3	GE TC2368S	30A, 240 VAC, 7.5 HP; 20A, 600 VAC, 15 HP			

Ordering information:

Dead end			Through feed		
No. of poles	Hub size	Cat. # With switch	No. of poles	Hub size	Cat. # With switch
2	$\frac{3}{4}$ "	EFD218 T8	2	$\frac{3}{4}$ "	EFDC218 T8
	1"	EFD318 T8		1"	EFDC318 T8
3	$\frac{3}{4}$ "	EFD2419	3	$\frac{3}{4}$ "	EFDC2419
	1"	EFD3419		1"	EFDC3419

Dimensions^B (in inches):



Hub size	h	a
$\frac{3}{4}$ "	$\frac{7}{8}$	$\frac{13}{16}$
1"	1	$\frac{15}{16}$

^AAdd GB suffix. Seals must be installed within $\frac{1}{16}$ " of each conduit opening for Group B usage.

^BDimensions are approximate, not for construction purposes.