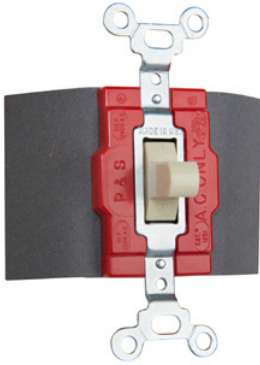


Single-Pole, Double-Throw Manual Control Switch, 20A, 120/277V.



## Features & Benefits

Oversize silver alloy contacts for long life and better heat dissipation.

Side wired terminals accept #14 - #10 AWG copper or copper-clad conductors.

Fiber terminal insulation barriers standard.

Can be mounted in standard device boxes or in NEMA 1 sheet steel enclosures.

Bodies, covers, and toggles molded of durable nylon.

Single Pole-Double Throw and Double Pole-Double Throw.

Locking Switches supplied with one 1498-NT key.

Normally open.

For covering patents, see [www.legrand.us/patents](http://www.legrand.us/patents).

For compatible wall plate options, from our TradeMaster unbreakable plates to our radiant screwless plates to our metal wall plates, [click here](#).

## Specifications

### General Info

Product Line	Pass & Seymour	Color	Ivory
UPC Number	785007125115	Country Of Origin	Mexico
Standard	UL 498		

### Dimensions

Product Width US	1.5 in	Product Depth US	1.469 in
Product Height US	3.281 in		

---

Listing Agencies / 3rd Party Agencies

CSA Listed	Yes	cULus Listed	Yes
------------	-----	--------------	-----

CSA File Number	17949
-----------------	-------

---

Technical Information

Amperage	20 A	Voltage	120.0 V
----------	------	---------	---------

---