

Applications:

GUP junction boxes are used in threaded rigid conduit systems in hazardous areas:

- To function as a junction or pull box
- Where space is limited, such as in gasoline pumps
- Indoors or outdoors

Features:

- Compact in design
- Supplied with a variety of hubs (six hubs and three plugs or 10 hubs and seven plugs)
- Cover sealed with standard o-ring gasket for raintight enclosure

Certifications and compliances:

NEC/CEC:

- Class I, Divisions 1 & 2, Groups C, D
- Class II, Division 1, Groups E, F, G
- Class II, Division 2, Groups F, G
- Class III

UL standard:

- UL1203

CSA standard:

- C22.2 No. 30

Standard materials:

- Bodies – Feraloy iron alloy
- Covers – copper-free aluminum

Standard finishes:

- Feraloy iron alloy – electrogalvanized and aluminum acrylic paint
- Copper-free aluminum – natural

Options:

Description

- Feraloy iron alloy cover..... **WOD**

Suffix

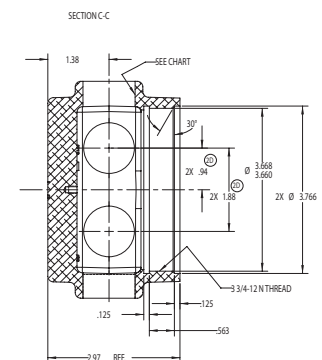
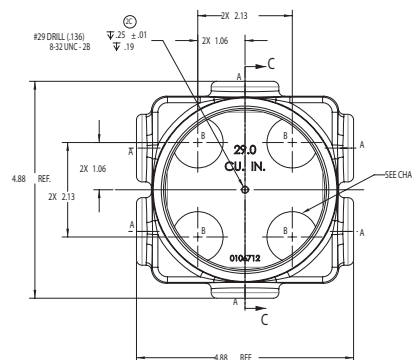
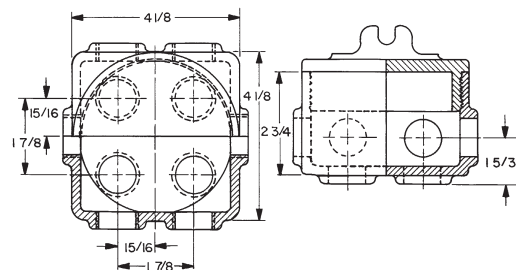
WOD



Ordering information:

Cat. #	Top hubs	Bottom hubs	Side hubs	Back hubs
GUP215A	(2) 3/4"	(2) 3/4"	(1) 3/4"	None
GUP214B	(2) 3/4"	(2) 3/4"	(1) 3/4"	(4) 3/4"
GUP314C	(2) 3/4"	(2) 3/4"	(1) 3/4"	(4) 1"
GUP315D	(2) 1"	(2) 1"	(1) 1"	(4) 1"

Dimensions (in inches):



GUP315 only

A Furnished with (3) 3/4" pipe plugs.

B Furnished with (7) 3/4" pipe plugs.

C Furnished with (4) 3/4" pipe plugs and (3) 1" pipe plugs.

D Furnished with (4) 1" pipe plugs and (3) 1" pipe plugs.

For conduit liner ordering information, see Section 6E.