

HUBBELL
Wiring Device-Kellems

SPIKESHIELD®

Surge Protective Devices

UL1449 5th Edition



Panel Surge Products



Surge Strip Products

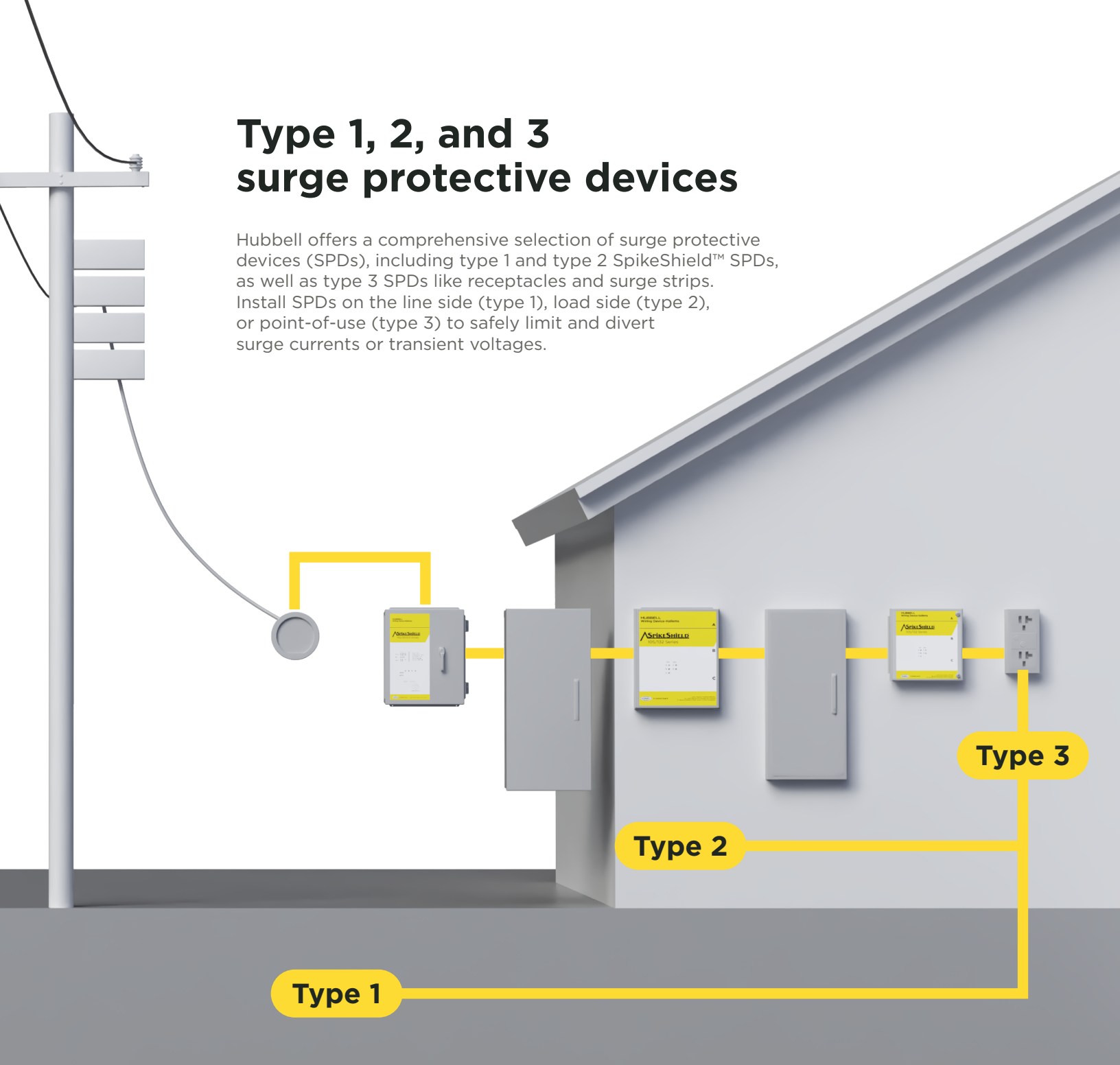


Surge Receptacles



Type 1, 2, and 3 surge protective devices

Hubbell offers a comprehensive selection of surge protective devices (SPDs), including type 1 and type 2 SpikeShield™ SPDs, as well as type 3 SPDs like receptacles and surge strips. Install SPDs on the line side (type 1), load side (type 2), or point-of-use (type 3) to safely limit and divert surge currents or transient voltages.

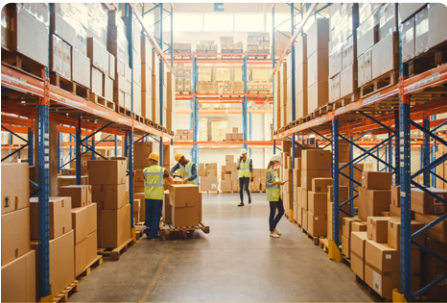


Cascading approach ensures protection at multiple levels

Our full line of SPDs provides a cascading approach from the service entrance (Type 1) to the branch panel (Type 2) and point-of-use (Type 3). This approach protects buildings and residents and also meets National Electric Code (NEC) requirements, which requires that all dwelling units be provided with a SPD.

Reliable protection across industries

Our SPDs keep users, residents, and electronics safe from power surges in commercial, residential, industrial, and institutional environments, from computer labs and classrooms to data centers and manufacturing facilities.



Commercial



Hospitality



Computer Labs



Healthcare



Data Centers



Schools and Universities

Panel Surge Products

The SpikeShield® line of panel surge protective devices offers a broad selection of products to meet the many requirements of industrial, commercial, institutional, and residential applications. Hubbell provides a complete offering of high quality panel surge products.

- All Type 1 and Type 2 panel surge products are UL1449 fifth edition listed.
- Protection levels from 50 kA to 300 kA to handle all real world surge events.
- 150 and 300 kA versions feature options with or without a disconnect switch. 132kA unit is available in a steel or non-metallic enclosure.
- Ideal for protecting variable speed drives or other sensitive equipment on the plant floor.



Surge Strip Products

Hubbell SpikeShield surge strip devices feature a wide range of products to handle every application or need.

- Hubbell offers the industry's first UL2930 listed HCOA for patient care areas.
- Two USB ports in our four outlet model are ideal for charging devices.
- Yellow high visibility units are ideal for protecting sensitive equipment in areas that require a more robust surge strip.



Surge Receptacles

Hubbell offers a broad range of SPD receptacles with two 22mm square MOVs that provide 240 joules of surge protection for each mode.



Service/Branch Panel Protection

Type 1 SPD

Type 1 SPDs can be used in Type 2 applications as well (Type 2 rated devices cannot be used at the service entrance in a Type 1 location).

300,000 and 150,000 Peak Amp Capacity

- Surge counter included in all units
- NEMA 12 enclosure
- LED and audible alarm status indicator
- UL1449 5th edition
- Versions with a disconnect also include a surge counter



132,000 Peak Amp Capacity

- Protect branch panels, safety switches and load centers
- NEMA 4X enclosure
- LED and audible alarm status indicator
- UL1449 5th edition
- Available in steel or non-metallic enclosure



105,000 Peak Amp Capacity

- Listed to UL1449 5th edition
- Ideal for areas where space is a major consideration
- Short circuit current rating (SCCR) of 150kA and nominal discharge current (In) of 20 kA

50,000 Peak Amp Capacity

- NEMA 6 enclosure that can be installed on the line side or load side of a service entrance
- Great design for line or load side in restricted spaces
- 150kA SCCR rating, UL1449 5th edition



SpikeShield® Surge Strips

Type 3 SPD

Healthcare Outlet Assembly (HCOA)

Hubbell's UL2930 HCOAs are the industry's first UL listed product for patient care areas. The product is available with or without L-N surge protection.

Housing Design

- 15A and 20A 125V versions
- Surge protected models in all configurations
- Non-surge protected RPT models in all configurations

Safety

- Tamper-resistant flip covers
- Green LED indicates surge protection working
- Hospital grade receptacles featuring industry best tamper resistant shutter design

Cord

- 6 ft. or 15 ft. cord length
- 12/3 AWG cord on 15A and 20A models
- 45° angle plug (15A series) or 90° angle plug (20A series)

Contacts

- Equipment grounding terminal



SPD with Tamper Resistant Receptacles and Heavy Duty Plug

- Heavy duty metal housing
- cULus 1449 5th Edition

Hospital Grade:

- Hospital grade tamper-resistant receptacles with a hospital grade plug
- Available with a 2-port USB charging outlet

Industrial Grade:

- Tamper resistant receptacles with a heavy duty plug
- UL1363



Non-Metallic Surge Strips

- Transformer spaced outlet(s)
- 15A resetable push on/off circuit breaker switch
- Power and ground indicating LEDs



High Visibility Yellow Surge Strips

- Metal housing with wire management and a six foot cord
- Three transformer spaced outlets (two on six outlet model)
- 350 joules/6.5kA rating



Surge Strip with USB Ports

- Two USB ports for charging electronic devices and four transformer spaced outlets
- Black non-metallic housing with six foot cord and lighted power on switch
- Power and ground indicating LEDs
- Features 90° Angle Plug
- 1050 joules/19.5kA rating



SpikeShield® Surge Receptacles

Type 3 SPD

- Audible alarm provides notification of surge protection loss.
- Muting screw allows user to turn alarm off once replacement has been scheduled
- Distinctive surge symbol provides quick visual identification of surge suppression receptacle
- Available in hospital grade and specification grade
- Meets UL Standards UL1449 5th Edition and UL498

SNAPConnect® Tamper Resistant Receptacles

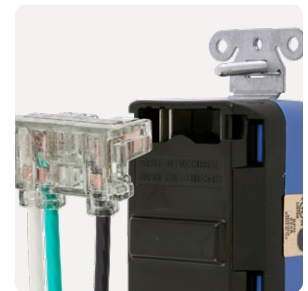
- Attractive flush fit
- Shallow box depth means more room for wiring
- Meets NEC® code for tamper resistant
- Eliminates exposed live terminals on the device

Protection

- Offers 240 joules of protection and 15 kA peak current rating
- Surge protection LED indicator flashes when surge protection is lost

Installation

- SNAPConnect® devices reduce labor time during installation and when being serviced in the future
- Connectors available with solid or stranded leads
- Custom length leads available
- Push on wire option also available on SNAPConnectors



Screw Termination Receptacles

- Power-on indicator light

Specification Grade Duplex Receptacles

- Available in 4-PLEX®

Isolated Ground Duplex Receptacles

- IG triangle on the face of the receptacle clearly indicates isolated ground device on the face of the receptacle
- A clean path provides a clean ground for sensitive equipment



Ordering Information

Service/Branch Panel Protection (Type 1 SPD)

300,000 Peak Amp Capacity			
Voltage	Configuration	Standard	With Disconnect
120/240V AC Single Phase	1Ph. 3-wire +G	HBL3P300S	HBL3P300SD
120/208V AC Wye	3Ph. Wye 4-wire +G	HBL4P300S	HBL4P300SD
240V AC Delta	3Ph. Delta 3-wire Corner Gnd Δ	HBL5P300S	HBL5P300SD
240/120V AC Delta split phase	3Ph. Delta 4-wire +G 'High Leg'	HBL6P300S	HBL6P300SD
277/480V AC Wye	3Ph. Delta 3-wire +G	HBL8P300S	HBL8P300SD
480V AC Delta	3Ph. Delta 3-wire Corner Gnd Δ	HBL9P300S	HBL9P300SD
347/600V AC Wye	3Ph. Wye 4-wire +G	HBL10P300S	HBL10P300SD
150,000 Peak Amp Capacity			
Voltage	Configuration	Standard	With Disconnect
120/240V AC Single Phase	1Ph. 3-wire +G	HBL3P150S	HBL3P150SD
120/208V AC Wye	3Ph. Wye 4-wire +G	HBL4P150S	HBL4P150SD
240V AC Delta	3Ph. Delta 3-wire Corner Gnd Δ	HBL5P150S	HBL5P150SD
240/120V AC Delta split phase	3Ph. Delta 4-wire +G 'High Leg'	HBL6P150S	HBL6P150SD
277/480V AC Wye	3Ph. Delta 3-wire +G	HBL8P150S	HBL8P150SD
480V AC Delta	3Ph. Delta 3-wire Corner Gnd Δ	HBL9P150S	HBL9P150SD
347/600V AC Wye	3Ph. Wye 4-wire +G	HBL10P150S	HBL10P150SD
132,000 Peak Amp Capacity			
Voltage	Configuration	Steel Enclosure	Non-metallic Enclosure
120/240V AC Single Phase	1Ph. 3-wire +G	HBL3P132S	HBL3P132NM
120/208V AC Wye	3Ph. Wye 4-wire +G	HBL4P132S	HBL4P132NM
240V AC Delta	3Ph. Delta 3-wire Corner Gnd Δ	HBL5P132S	HBL5P132NM
240/120V AC Delta split phase	3Ph. Delta 4-wire +G 'High Leg'	HBL6P132S	HBL6P132NM
277/480V AC Wye	3Ph. Delta 3-wire +G	HBL8P132S	HBL8P132NM
480V AC Delta	3Ph. Delta 3-wire Corner Gnd Δ	HBL9P132S	HBL9P132NM
347/600V AC Wye	3Ph. Wye 4-wire +G	HBL10P132S	HBL10P132NM
105,000 Peak Amp Capacity			
Voltage	Configuration		Non-metallic Enclosure
120/240V AC Single Phase	1Ph. 3-wire +G		HBL3P105NM
120/208V AC Wye*	3Ph. Wye 4-wire +G		HBL4P105NM
240V AC Delta	3Ph. Delta 3-wire Corner Gnd Δ		HBL5P105NM
240/120V AC Delta split phase	3Ph. Delta 4-wire +G 'High Leg'		HBL6P105NM
277/480V AC Wye**	3Ph. Delta 3-wire +G		HBL8P105NM
480V AC Delta	3Ph. Delta 3-wire Corner Gnd Δ		HBL9P105NM
50,000 Peak Amp Capacity			
Voltage	Configuration	Back Wired	Side Wired
120/240V AC Single Phase	1Ph. 3-wire +G	HBL3PB50ALU	HBL3PS50ALU
120/208V AC Wye*	3Ph. Wye 4-wire +G	HBL4PB50ALU	
240V AC Delta	3Ph. Delta 3-wire Corner Gnd Δ	HBL5PB50ALU	
277/480V AC Wye**	3Ph. Delta 3-wire +G	HBL8PB50ALU	
480V AC Delta	3Ph. Delta 3-wire Corner Gnd Δ	HBL9PB50ALU	
347/600V AC Wye	3Ph. Wye 4-wire +G	HBL10PB50ALU	
600V AC Delta	3Ph. Delta 3-wire Corner Gnd Δ	HBL11PB50ALU	



Ordering Information

SpikeShield® Surge Strips

UL2930 Health Care Outlet Assembly (HCOA)

Description	Joule Rating	Cord Length	15 Amp	20 Amp
HCOA with L-N surge protection, six outlets, white	550	6'	HBL6MG6	HBL6MG620
	550	15'	HBL6MG15	HBL6MG1520
HCOA relocatable power tap (RPT), six outlets, white	N/A	6'	HBL6MGRPT6	HBL6MGRPT620
	N/A	15'	HBL6MGRPT15	HBL6MGRPT1520

SpikeShield® Surge Protective Devices (SPD) with Tamper-Resistant Receptacles and Heavy Duty Plug

Description	Joule Rating	Cord Length	15 Amp	20 Amp
Hospital grade UL Type 3 SPD, heavy duty metal housing, six outlets, white	1100	6'	HBL6HG6	HBL6HG620
	1100	15'	HBL6HG15	HBL6HG1520
Hospital grade UL Type 3 SPD, heavy duty metal housing with 2-port USB, four outlets, white	1100	6'	HBL6HGUSB6	—
Industrial grade UL Type 3 SPD, heavy duty metal housing, six outlets, white	1100	6'	HBL6SS6	HBL6SS620
	1100	15'	HBL6SS15	HBL6SS1520

Metallic Strips

Description	Joule Rating	Cord Length	Down Line Warranty*	Catalog Number
Power Strip, No surge protection, six outlets, office white	N/A	6'	N/A	HBL6MPS
Power Strip, No surge protection, six outlets, office white	N/A	15'	N/A	HBL6MPS15
Metal SPD, 19.5 kA peak rating, six outlets, office white	1,050	6'	\$2,500	HBL6MPS1050
Metal SPD, 19.5 kA peak rating, six outlets, office white	1,050	15'	\$2,500	HBL6MPS105015
SPD w/Wire Management, 6.5 kA peak rating, six outlets, yellow	350	6'	\$2,500	HBL6PS350YL
SPD w/Wire Management, 6.5 kA peak rating, eight outlets, yellow	350	6'	\$2,500	HBL8PS350YL

Non-Metallic Strips

Description	Joule Rating	Cord Length	Down Line Warranty*	Catalog Number
Power Strip, No surge protection, six outlets, office white	N/A	6'	N/A	HBL6PPS
SPD, 6.5 kA peak rating, six outlets, office white	350	6'	\$2,500	HBL6PS350A
SPD, 6.5 kA peak rating, six outlets, office white	350	15'	\$2,500	HBL6PS35015A
SPD w/Fax/Modem, 19.5 kA peak rating, six outlets, office white	1,050	6'	\$2,500	HBL6PS1050MA
SPD, 19.5 kA peak rating, seven outlets, office white	1,050	6'	\$10,000	HBL7PS1050A
SPD w/Fax/Modem, 19.5 kA peak rating, seven outlets, office white	1,050	6'	\$10,000	HBL7PS1050MA
SPD, 19.5 kA peak rating, seven outlets, office white	1,050	15'	\$10,000	HBL7PS105015A
SPD w/Fax/Modem/CATV, 39 kA peak rating, eight outlets, office white	2,100	6'	\$25,000	HBL8PS2100MA
SPD with two USB ports and 90° angle plug, 19.5 kA peak rating, four outlets, black	1,050	6'	\$10,000	HBL4PS1050USBA

*See warranty information inside product box for details.



SpikeShield® Surge Protection Receptacles

SNAPConnect® Receptacles

Description	Color	Commercial Grade		Hospital Grade	
		15A 125V	20A 125V	15A 125V	20A 125V
Tamper resistant receptacle with power indicating LED	Blue	SNAP5262S	SNAP5362S	SNAP8262S	SNAP8362S
	Gray	SNAP5262GYS	SNAP5362GYS	SNAP8262GYS	SNAP8362GYS
	Ivory	SNAP5262IS	SNAP5362IS	SNAP8262IS	SNAP8362IS
	Light Almond	SNAP5262LAS	SNAP5362LAS	SNAP8262LAS	SNAP8362LAS
	Red	—	—	SNAP8262RS	SNAP8362RS
	White	SNAP5262WS	SNAP5362WS	SNAP8262WS	SNAP8362WS

Right Angle Pigtailed Connector, 600V

Description	Solid	Stranded
Clear right angle terminal with 6 inch leads #12 AWG THHN/THWN-2; polycarbonate housing material	SNAP1RNA	SNAP2RNA

Screw Termination Receptacles

Description	Color	Commercial Grade		Hospital Grade	
		15A	20A	15A	20A
Surge suppression duplex receptacles with light, 240 joules/15000A per mode	Blue	HBL5260SA	HBL5360SA	—	—
	Ivory	HBL5260ISA	HBL5360ISA	—	—
	Office White	HBL5260WSA	HBL5360WSA	—	—
Surge suppression duplex receptacles with light and alarm, 240 joules/15000A per mode	Almond	HBL5262ALSA	HBL5362ALSA	HBL8262ALSA	HBL8362ALSA
	Blue	HBL5262SA	HBL5362SA	HBL8262SA	HBL8362SA
	Gray	HBL5262GYSA	HBL5362GYSA	HBL8262GYSA	HBL8362GYSA
	Ivory	HBL5262ISA	HBL5362ISA	HBL8262ISA	HBL8362ISA
	Office White	HBL5262OWSA	HBL5362OWSA	—	—
	Red	—	—	HBL8262RSA	HBL8362RSA
Isolated ground, surge suppression duplex receptacles with light and alarm, 240 joules/15000A per mode	White	HBL5262WSA	HBL5362WSA	HBL8262WSA	HBL8362WSA
	Blue	IG5262SA	IG5362SA	IG8262SA	IG8362SA
	Gray	IG5262GYSA	IG5362GYSA	IG8262GYSA	IG8362GYSA
	Ivory	IG5262ISA	IG5362ISA	IG8262ISA	IG8362ISA
	Office White	IG5262OWSA	IG5362OWSA	—	—
	Orange	IG5262OSA	IG5362OSA	IG8262OSA	IG8362OSA
	Red	—	—	IG8262RSA	IG8362RSA
White	IG5262WSA	IG5362WSA	IG8262WSA	IG8362WSA	
4-PLEX® surge suppression duplex receptacles with lights. 80 joules/6500A per mode	Blue	HBL415S	HBL420S	—	HBL420HS
	Ivory	HBL415IS	HBL420IS	—	HBL420HIS
	Red	—	—	—	HBL420HRS

4-PLEX® Accessories

Description	Color	Catalog Number
4-PLEX adapter plates for 1- and 2-gang device boxes (4-PLEX mounts directly to 4" (101.6) square device boxes.)	Blue Ivory Red	HBL4APBL HBL4API HBL4APR
4-PLEX portable box. Portable 4" (101.6) square box with one cord grip. Accepts up to .66" (16.8) diameter cord.	Ivory	HBL4PBI

4-PLEX® box is not UL Listed.



HUBBELL **Wiring Device-Kellems**

Count on Hubbell Wiring Device-Kellems for the most reliable and innovative wiring device product line in North America

GET IN TOUCH:



custserv@hubbell.com



(800) 288-6000



www.hubbell.com/wiringdevice-kellems



Hubbell Wiring Device-Kellems
40 Waterview Drive
Shelton, CT 06484

