

PIR DUAL RELAY WALL SWITCH VACANCY SENSOR WITH NIGHTLIGHT

CS-350-N

Manual-on/automatic-off
control of two separate loads

Integral LED nightlight



Ideal for bathrooms

Adjustable time delay

DESCRIPTION

The CS-350-N Passive Infrared (PIR) Dual Relay Vacancy Sensor provides automatic lighting shutoff for applications that require separate switching of two loads. It is engineered to comply with specific provisions of California's Title 24-2013 energy code.

OPERATION

The CS-350-N operates as a manual-on sensor. Users must press one or both of the on/off pushbuttons to turn on the connected loads. The CS-350-N employs PIR technology to sense the difference between the infrared energy from a person in motion and the background space. It keeps the loads on as long as motion is detected and provides automatic shutoff, following a user-selected time delay, when motion is no longer detected. Users may turn the connected loads off manually.

INTEGRAL NIGHTLIGHT

The integral nightlight helps preserve night vision by providing low-level illumination when the connected loads are off. The nightlight uses energy-efficient LEDs.

APPLICATIONS

The CS-350-N PIR Dual Relay Vacancy Sensor is appropriate anywhere that manually-activated control of two loads from a single location is desired (e.g. in a bathroom to control the light and exhaust fan). It is also a suitable device for light commercial applications like small offices or storage areas. By providing control of two loads from a single gang device, the CS-350-N helps reduce wall clutter.

FEATURES

- Complies with 2011 NEC requirements
- Replaces standard switches for control of lighting and/or fans
- Contains two relays to control two independent lighting loads or circuits
- Adjustable time delay, 15 seconds to 30 minutes
- Amber LED nightlight illuminates whenever connected loads are off
- Lighted switch for visibility in darkened rooms
- Low-profile styling
- Operates most common types of lighting or fan motors
- Relay-based switching
- No current leakage to load in off mode for safety
- Compatible with decorator wall plates
- CA Title 24 compliant

PROJECT

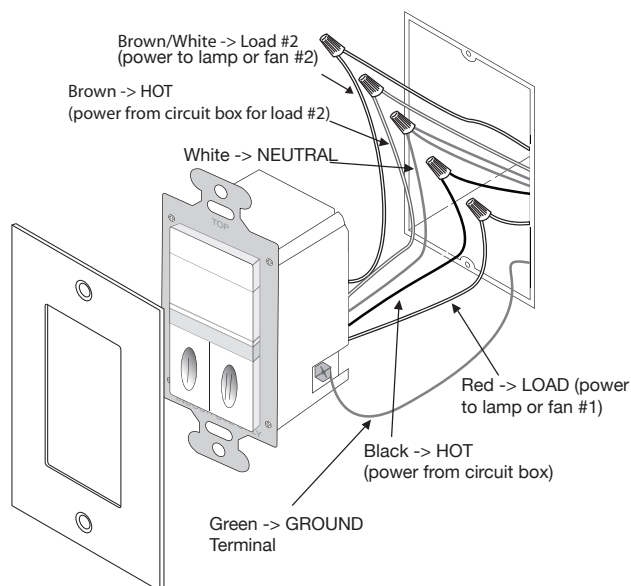
LOCATION/
TYPE

SPECIFICATIONS

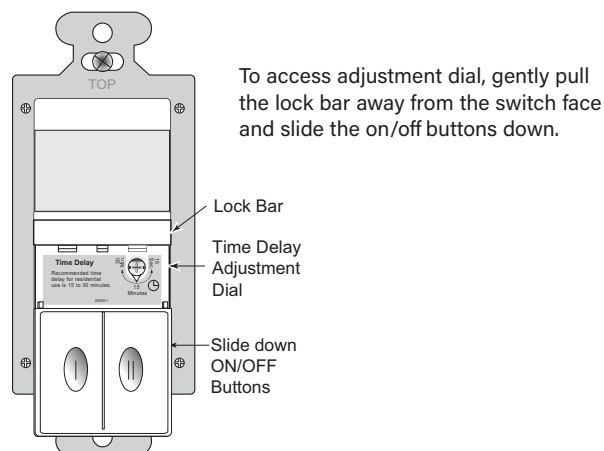
- 120 VAC, 60 Hz; neutral required
- Load ratings: 0-600W incandescent, LED, fluorescent, compact fluorescent (CFL), magnetic low voltage (MLV) or electronic low voltage (ELV) or 1/6 hp motor
- Adjustable time delay from 15 seconds to 30 minutes
- PIR coverage: 180°, 600 ft² (56 m²)
- 2.63" x 1.69" x 1.88" (67.8mm x 42.9mm x 47.8mm) L x W x D
- Operating conditions: 32-131°F (0-55°C), 95% RH, non-condensing; for indoor use only
- UL and cUL listed
- Five-year warranty

WIRING & CONTROLS

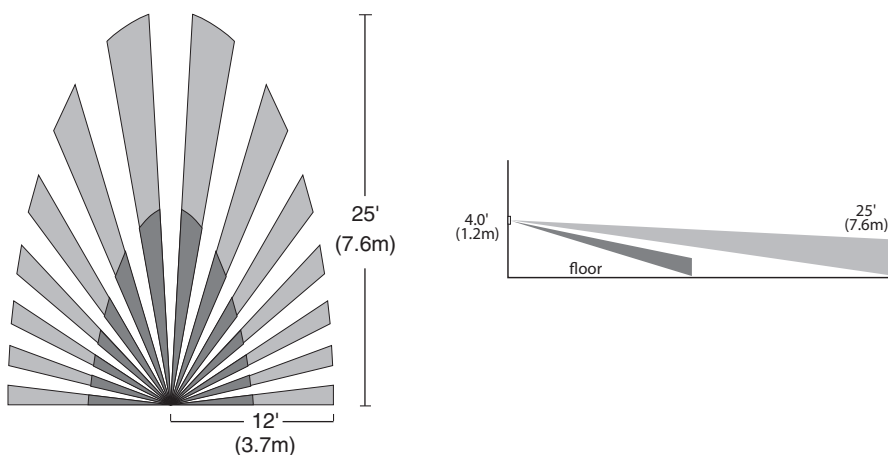
Wiring Diagram



Product Controls



COVERAGE



ORDERING INFORMATION

Catalog #	Color	Description	Voltage	Load Rating	Coverage
CS-350-N-W	White	PIR Dual Relay Wall Switch Vacancy Sensor with Nightlight	120 VAC, 60 Hz	0-600W incandescent, LED, fluorescent, CFL, MLV, ELV or 1/6 hp motor	80°, max. 600 ft ² (56m ²)

Order wall plate separately.

31708r2 Rev 05/2024