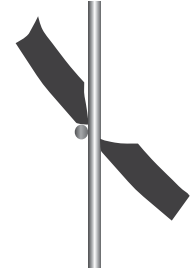
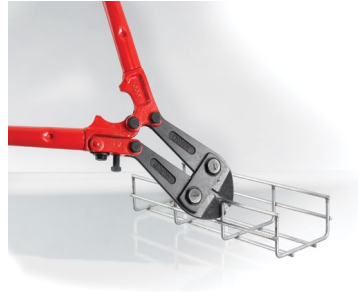


Technical Support - Cutting and Forming Fittings

Cutting Wire Basket Tray

- Always make field cuts with the side action angle cutting tool
- Cuts can be made on any finish, width or depth basket tray
- Cut as many segments required for sweep elbows (see splice quantity column on product pages)
- Remove any sharp edges to eliminate possible damage to cables



(Side action cutter)

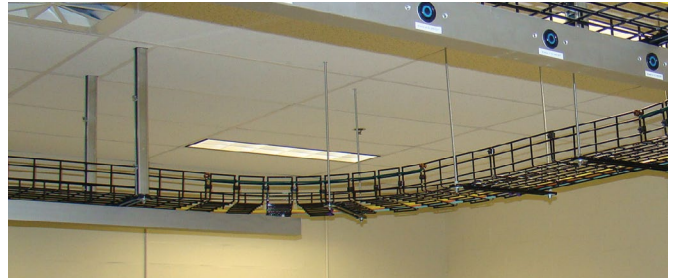
Cutting Tool

Description	Weight (Lb/each)	Qty. per Box	Catalog Number
Manual offset angled cutting tool, 24" leveraged handle	6.0	1	HBTCUTTOOL



How to Form a 90 Degree Flat Sweep Elbow

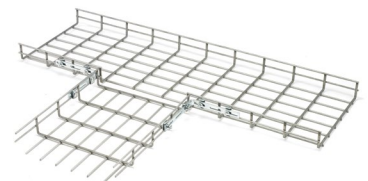
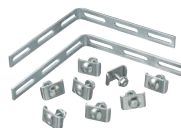
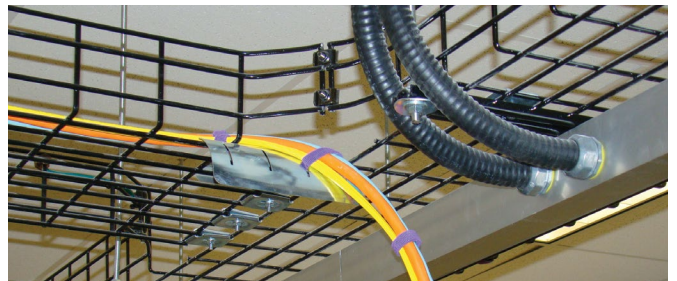
- Determine which wires must be cut for the type of fitting or redirection required; this will usually be the side and bottom wires of every other mesh section.
- Turn the tray over and cut the bottom wires.
- Cut the top side wire.
- Cut the remaining side wires; this creates open gaps in the side wall and bottom of the tray.
- Bend the tray to form the desired elbow radius curve by closing the gaps.
- Install splice kits and hardware where the wedge-shaped sections come together.
- Splice kits provide the mechanical connection as well as electrical grounding continuity.



HBTSK Splice Kit
See page W-12 for ordering information.

How to Form a Tee Fitting

- Determine the location of the horizontal "tee" fitting along the length of basket tray.
- Cut the side wires from the tray which shall be the horizontal tray section, to the same width as the perpendicular tray section.
- Do not cut the bottom wires.
- Align the perpendicular tray to the opening in the side of the horizontal tray.
- Position one angle bracket from the HBTCS corner splice kit on each side of the opening.
- Secure the angle brackets to the horizontal and perpendicular tray sections with splice kits (nut, bolt and washer) provided in the HBTCS corner splice kit.
- Support the tee fitting on all three sides of the "tee" using appropriate support method.



HBTCS Corner Splice
See page W-12 for ordering information.

Dimensions in Inches (mm)