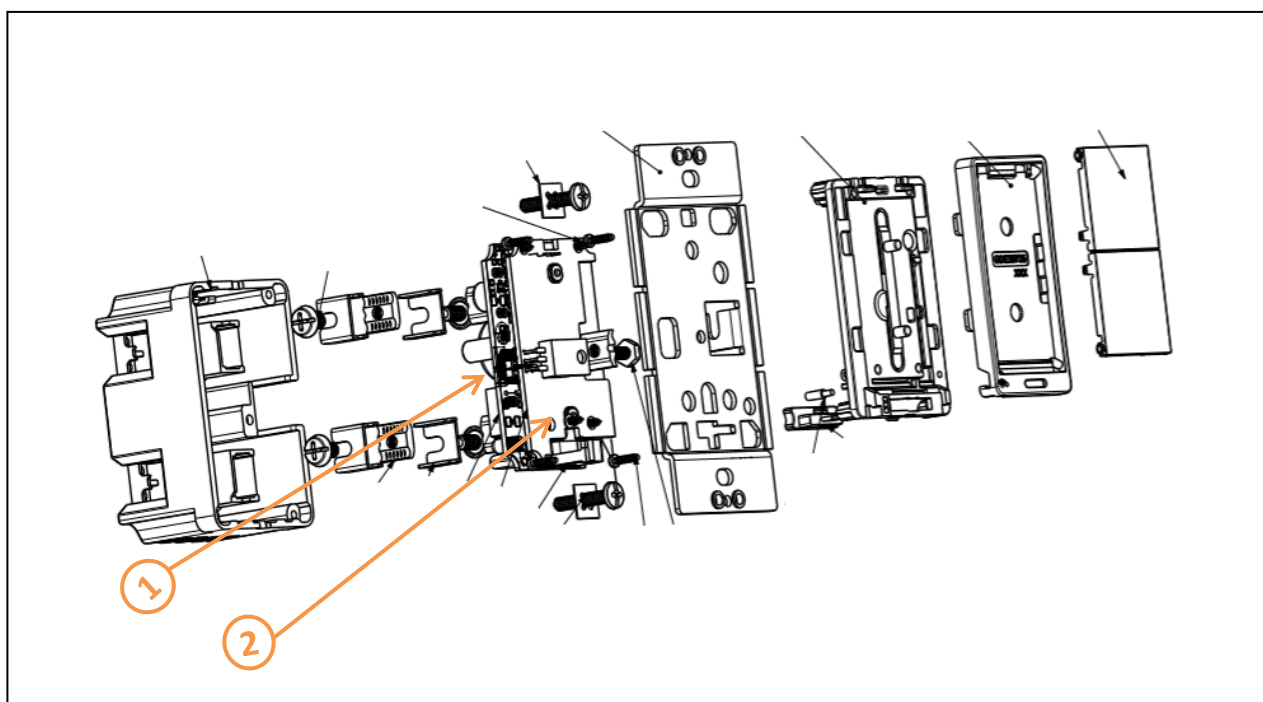


Product End of Life Instructions

WIFI 600W DIMMER SINGLE POLE WH



End of Life Instructions



Recommendation	Number on drawing	Component / Material	Weight (in g)	Comment
To be depolluted	1	Electronic Board (Communication) > 10cm ²	43.9	Including all soldering parts
To be depolluted	2	Electronic Board (Communication) > 10cm ²	10.2	Including all soldering parts

Product description

Manufacturer identification	Schneider Electric Industries SAS
Brand name	Square D
Product function	This product is a perfect wireless manual and remote on/off/dim bright control switch, replacement of regular on/off and dimmer switch, controlling incandescent, dimmable LED.
Product reference	SQR22601WHW
Total representative product mass	138.2 g
Representative product dimensions	32.9mm x 7.6mm x 96.2mm
Accessories	No
Date of information release	03/2021

Additional information

Legal information

The product family must be disposed according to the legislation of the country. This document is intended for use by end of life recyclers or treatment facilities. It provides the basic information to assure an appropriate end of life treatment for the components and materials of the product.

In case of special transportation: transportation method	No	
Recyclability potential	35%	Based on "ECO'DEEE recyclability and recoverability calculation method" (version V1, 20 Sep. 2008 presented to the French Agency for Environment and Energy Management: ADEME).

Schneider Electric Industries SAS
 Country Customer Care Center
<http://www.schneider-electric.com/contact>
 35, rue Joseph Monier
 CS 30323
 F- 92506 Rueil Malmaison Cedex
 RCS Nanterre 954 503 439
 Capital social 896 313 776 €
www.schneider-electric.com

Published by Schneider Electric

ENVEOLI2011020_V1

© 2019 - Schneider Electric – All rights reserved

03/2021