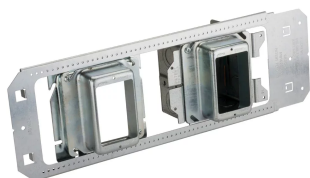




NVENT CADDY ALL-IN-ONE BETWEEN-STUD WITH REMOVABLE MUD RING, MULTI-BOX, 1 GANG, 1 1/4" DRYWALL, 3 5/8"

CATALOG NUMBER

A1BF3G43NAO



CERTIFICATIONS



FEATURES

Comes with multiple boxes pre-assembled for side by side power and data applications

Removable mud ring provides front access to the interior of the box

Pre-bent tabs on support bracket help to quickly square assembly to stud

Center marks provide easy height positioning

Includes multiple knockouts on each side of the box

PRODUCT ATTRIBUTES

Material: Steel

Finish: Pregalvanized

Knockout Sizes, Box 1: (8) 1/2", 3/4";(3) 1/2"

Gang, Box 1: 1

Ground Wire Included, Box 1: Yes

Volume, Box 1: 32.8"³

Gang, Box 2: 1

Ground Wire Included, Box 2: No

Drywall Thickness: 1 1/4"

Stud Spacing: 16 – 24"

Depth: 3 5/8"

A: 5 3/4"

B: 4 1/8"

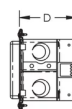
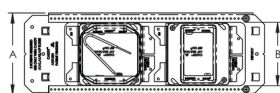
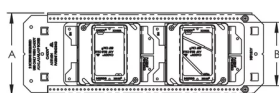
ADDITIONAL PRODUCT DETAILS

Ground wire pigtail is 10".

24" stud spacing requires use of three mounting screws.

Use only with nVent CADDY All-in-One box assemblies.

DIAGRAMS



WARNING

nVent products shall be installed and used only as indicated in nVent's product instruction sheets and training materials. Instruction sheets are available at www.nvent.com and from your nVent customer service representative. Improper installation, misuse, misapplication or other failure to completely follow nVent's instructions and warnings may cause product malfunction, property damage, serious bodily injury and death and/or void your warranty.

North America

+1.800.753.9221

Option 1 – Customer Care

Option 2 – Technical Support

Europe

Netherlands:

+31 800-0200135

France:

+33 800 901 793

Europe

Germany:

800 1890272

Other Countries:

+31 13 5835404

APAC

Shanghai:

+ 86 21 2412 1618/19

Sydney:

+61 2 9751 8500



Our powerful portfolio of brands:
nVent.com CADDY ERICO HOFFMAN RAYCHEM SCHROFF
TRACER