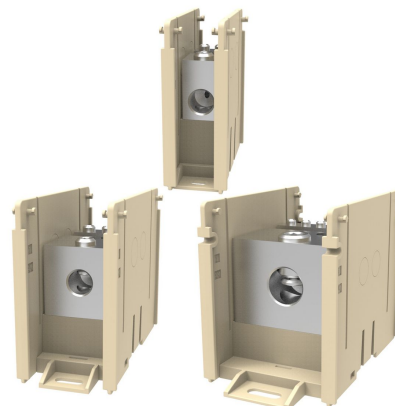


BDBLCS4TA, Flex Rated Power Distribution Block Adder

By Burndy

Catalog # [BDBLCS4TA](#)

Distribution block, 6 AWG-350 Kcmil (Run& Tap)



Features

- AL9CU dual rated for use with copper and aluminum conductors
- Range taking designs accommodate wire sizes up to 535 DLO and can support 1 or 2 run conductors and up to 12 taps for secondary circuits
- Allow for panel mounting, medium and large sizes also allow for DIN rail mounting
- Finger-Safe style are provided with translucent polycarbonate top covers and end plates permitting easy visual inspection, provide IEC 605219 IP-20 Rating
- Base and side barriers of glass-reinforced nylon 6/6 for extra durability and excellent insulating properties
- UL94 flammability rating of VO

Application

VERSI-POLE Power Distribution Blocks are designed to provide modular solutions to power distribution applications.

Specifications

Buy American Compliant	Contact Manufacturer
Certification - cULus	Yes
EU RoHS Indicator	Yes
Standards - RoHS Compliance	CM
Status	
Certification - CSA Approved	No
Buy America(n) Qualified	Contact Manufacturer

Conductor

Conductor - Copper Str Run Range	6 AWG - 350 kcmil
Conductor - Copper Str Tap Range	6 AWG - 350 kcmil
Conductor Type	AL C Str-Run;CU C Str-Run;AL C Str-Tap;CU C Str-Tap
Conductor - AL Str Run Range	6 AWG - 350 kcmil
Conductor - AL Str Tap Range	6 AWG - 350 kcmil

Configuration

Connector Type

Power Distribution Block

Current

Rating - Minimum Voltage	600
Amperage Rating	620 A
Voltage - Maximum	600 V

Dimensions

Dimension - Width mm	77 mm
Dimension - L Length Overall mm	141
Dimension - Height inch	4.12
Dimension - Height mm	0 mm
Dimension - Length Overall inch	5.54

General

Sub Brand	VERSI-POLE
Trade Name	VERSIPOLE™
Plated	Y
Insulation	Y
Type	BDC
UPC 12 Digit	621945448933
UPC 14 Digit GTIN	00621945448933
Material	Aluminum
Plating Type	Tin
UPC	621945448933

Logistics

Minimum Pack Quantity	1
Carton Quantity	1
Pallet Quantity	720

Operational

Temperature Rating	194° F
--------------------	--------

Product Assets

[Catalog \[English\]](#)

[Installation Manual \[English\]](#)