

# Cam-Type Devices



## Series 15 - Inlines and Panel Mount Receptacles

Enclosure Types  
3R, 4X, 12

### 150 Amp Inlines



Description	Color	Male Inline	Female Inline
Thermoplastic elastomer, cable size #8 - #2 AWG	Black White Green Red Blue Brown Orange Yellow Gray	<b>HBL15MBK</b> <b>HBL15MW</b> <b>HBL15MGN</b> <b>HBL15MR</b> <b>HBL15MBL</b> <b>HBL15MBN</b> <b>HBL15MO</b> <b>HBL15MY</b> <b>HBL15MGY</b>	<b>HBL15FBK</b> <b>HBL15FW</b> <b>HBL15FGN</b> <b>HBL15FR</b> <b>HBL15FBL</b> <b>HBL15FBN</b> <b>HBL15FO</b> <b>HBL15FY</b> <b>HBL15FGY</b>

### 150A Panel Mount Receptacles

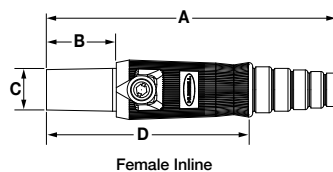
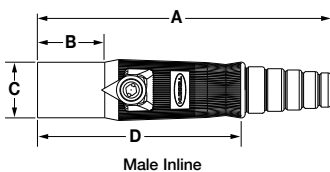


Description	Color	Stud Type 1 $\frac{1}{16}$ " x $\frac{3}{4}$ "		Double Set Screw Cable Size #4 - 4/0	
		Male Receptacles	Female Receptacles	Male Receptacles	Female Receptacles
Panel mount, thermoplastic, mates with 150 amp Inlines, cable size #8 - #2 AWG	Black White Green Red Blue Brown Orange Yellow Gray*	<b>HBL15MRSBK</b> <b>HBL15MRSW</b> <b>HBL15MRSGN</b> <b>HBL15MRSR</b> <b>HBL15MRSBL</b> <b>HBL15MRSDN</b> <b>HBL15MRSDO</b> <b>HBL15MRSY</b> —	<b>HBL15FRSBK</b> <b>HBL15FRSW</b> <b>HBL15FRSGN</b> <b>HBL15FRSR</b> <b>HBL15FRSBL</b> <b>HBL15FRSDN</b> <b>HBL15FRSDO</b> <b>HBL15FRSY</b> —	<b>HBL15MRBK</b> <b>HBL15MRW</b> <b>HBL15MRGN</b> <b>HBL15MRR</b> <b>HBL15MRBL</b> <b>HBL15MRBN</b> <b>HBL15MRO</b> <b>HBL15MRY</b> <b>HBL15MRGY</b>	<b>HBL15FRBK</b> <b>HBL15FRW</b> <b>HBL15FRGN</b> <b>HBL15FRR</b> <b>HBL15FRBL</b> <b>HBL15FRBN</b> <b>HBL15FRO</b> <b>HBL15FRY</b> <b>HBL15FRGY</b>

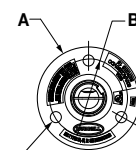
Note: \*Gray is available upon request. Contact factory.

### Product Dimensions Inches (mm)

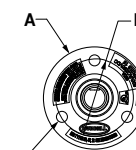
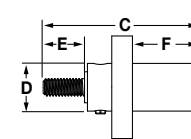
	Male Inline	Female Inline
A	4.54" (115.3)	4.60" (116.8)
B	1.04" (26.4)	1.11" (28.2)
C	0.86" (21.8)	0.68" (17.3)
D	3.22" (81.7)	3.28" (83.2)



	Receptacle			
	Stud Type		Double Set Screw	
	Male	Female	Male	Female
A	1.86" (47.2)	1.86" (47.2)	1.86" (47.2)	1.86" (47.2)
B	1.37" (34.8)	1.37" (34.8)	1.37" (34.8)	1.37" (34.8)
C	2.82" (71.6)	2.88" (73.1)	2.90" (73.6)	2.95" (74.9)
D	0.86" (22.0)	0.86" (22.0)	0.86" (22.0)	0.86" (22.0)
E	0.75" (19.0)	0.75" (19.0)	0.88" (22.2)	0.87" (22.2)
F	1.20" (30.5)	1.26" (32.0)	1.20" (30.5)	1.26" (32.0)
G	3x Ø .20"	3x Ø .20"	3x Ø .20"	3x Ø .20"
	Stud Termination 5/16-18		(2) 5/32 Socket Head Set Screws	



G - Mounting Holes  
Threaded Stud (Male Shown)



G - Mounting Holes  
Double Set Screw (Male Shown)