

30mm Command/52, Chrome Finish Heavy Duty, Watertight/Oiltight Complete Metal Unit Illuminated Indicator Light Full Voltage type, 24V AC/DC LED Lamp, BA9s Plastic Lens, Red UL Listed, CSA Certified NEMA 1,3,3R,4,4X,12,13 & Automotive Standards

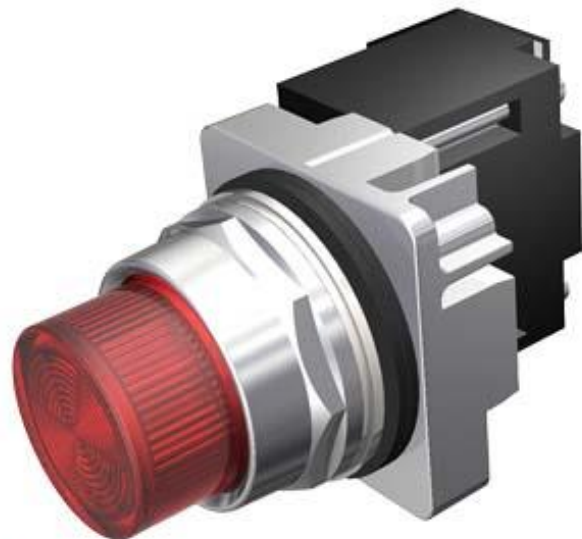


Figure similar

Product brand name	Siemens Pilot Devices
Design of the product	Complete Unit, Round
Enclosure	
Number of command points	1
Delivery state <ul style="list-style-type: none">• as a kit	No
Actuator	
Design of the operating mechanism	Indicator Light
Product extension optional Light source	Yes
Color <ul style="list-style-type: none">• of the actuating element	red
Material of the actuating element	plastic
Shape of the actuating element	Concentric rings
Front ring	
Product component front ring	Yes
Design of the front ring	standard
Material of the front ring	metal

Color of the front ring	chrome
Holder	
Material of the holder	metal
Contact block/ lampholder	
Mounting type	BA 9s, with single LED lamp
Number of lampholders	1
Display	
Number of LED modules	1
General technical data	
Product component	
• lamp transformer	No
• Light source	Yes
Degree of pollution	1
Type of voltage	
• of the operating voltage	AC/DC
• of the input voltage	AC/DC
Surge voltage resistance rated value	4 kV
Protection class IP	IP66
• of the terminal	IP20
Mechanical service life (switching cycles)	
• typical	100
Operating voltage	
• at AC	
— at 60 Hz rated value	24 ... 28 V
• at DC rated value	24 ... 28 V
Supply voltage	
Type of voltage of the supply voltage	
• of the light source	AC/DC
Supply voltage of the light source at AC	
• at 60 Hz rated value	28 ... 24 V
Supply voltage of the light source at DC	
• rated value	28 ... 24 V
Connections/Terminals	
Type of electrical connection	screw-type terminals
• of modules and accessories	screw-type terminals
Type of connectable conductor cross-sections	
• at AWG conductors for auxiliary contacts	1x (18 ... 12), 2x (18 ... 16), 2x (16 ... 14), 2x 12
Tightening torque of the screws in the bracket	20 N·m
Tightening torque [lbf·in]	
• with screw-type terminals	8 ... 8 lbf·in

Lamp	
Type of light source	Single LED
Color of the light source	red
Safety related data	
Protection against electrical shock	finger safe
Ambient conditions	
Ambient temperature	
• during operation	-35 ... +70 °C
• during storage	-40 ... +85 °C
Installation/ mounting/ dimensions	
• Mounting type of modules and accessories	screw-mounting
Shape of the installation opening	round
Certificates/approvals	
Further information	
Information- and Downloadcenter (Catalogs, Brochures,...) http://www.siemens.com/industrial-controls/catalogs	
Industry Mall (Online ordering system) https://mall.industry.siemens.com/mall/en/en/Catalog/product?mlfb=US2:52PL4D2XB	
Cax online generator http://support.automation.siemens.com/WW/CAXorder/default.aspx?lang=en&mlfb=US2:52PL4D2XB	
Service&Support (Manuals, Certificates, Characteristics, FAQs,...) https://support.industry.siemens.com/cs/ww/en/ps/US2:52PL4D2XB	
Image database (product images, 2D dimension drawings, 3D models, device circuit diagrams, EPLAN macros, ...) http://www.automation.siemens.com/bilddb/cax_de.aspx?mlfb=US2:52PL4D2XB&lang=en	
last modified:	06/03/2019