



**Walker® Infloor Systems**

## **RC4 Replacement Scrub Water Cover Assembly Kit INSTALLATION INSTRUCTIONS**

Installation Instruction No.: 1 002 139 R1 – Updated October 2003

Walker® electrical systems conform to and should be properly grounded in compliance with requirements of the current National Electrical Code or codes administered by local authorities.

All electrical products may present a possible shock or fire hazard if improperly installed or used. Walker electrical products may bear the mark as UL Listed and/or Classified and should be installed in conformance with current local and/or the National Electrical Code.

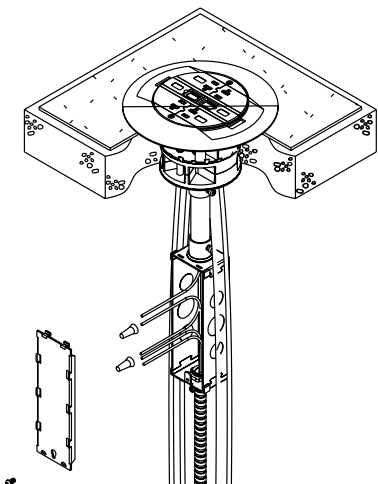
### **IMPORTANT – PLEASE READ ALL INSTRUCTIONS BEFORE BEGINNING.**

**Products Covered:** RC4KTC

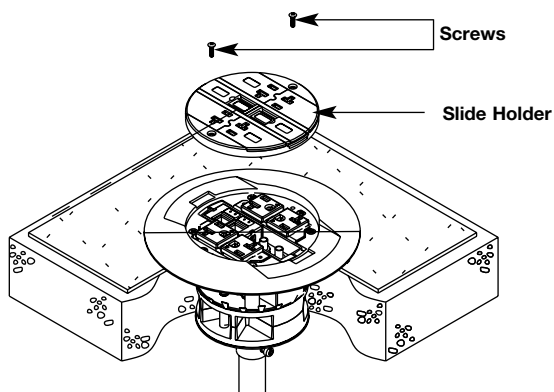
**CAUTION:** Do Not operate tile stripper or resurfacing equipment over top of covers. This may result in damage to the surface finish of the product.

**Step 1.** Disconnect receptacle wiring in junction box.

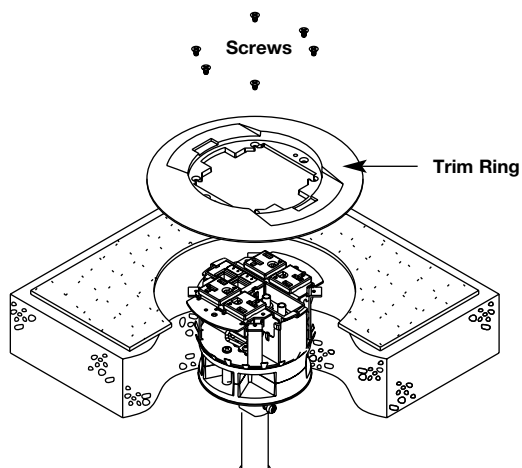
**CAUTION:** De-energize circuit before removing junction box cover.



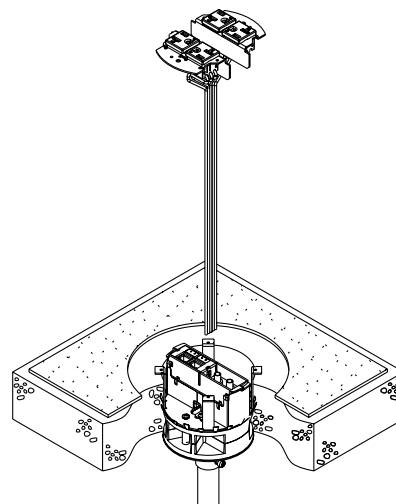
**Step 2.** Remove two screws and slide holder.



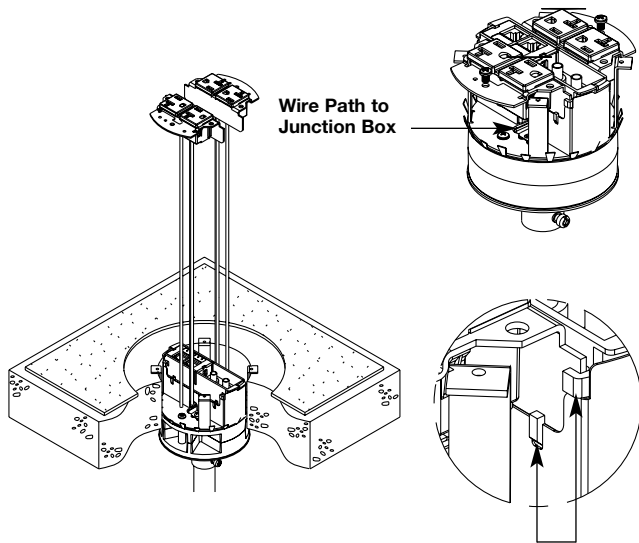
**Step 3.** Remove six screws and trim ring.



**Step 4.** Pull receptacles and receptacle brackets out of Poke-Thru device.

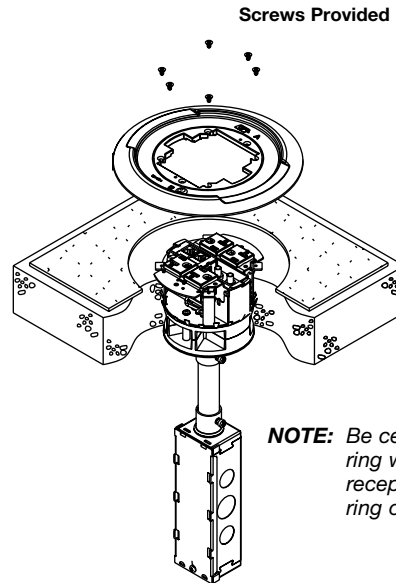


**Step 5.** Guide replacement receptacle brackets into place. Direct wire leads through indicated opening to junction box below.



**Important:** Receptacle bracket slides into the tabs shown here.

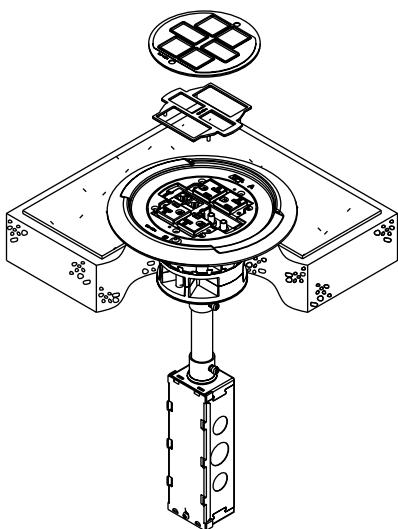
**Step 6.** Attach trim ring to bracket with four screws provided. Attach trim ring to receptacle bracket with two screws provided.



**NOTE:** Be certain to line up the trim ring with the holes on the receptacle bracket. The trim ring only attaches one way.

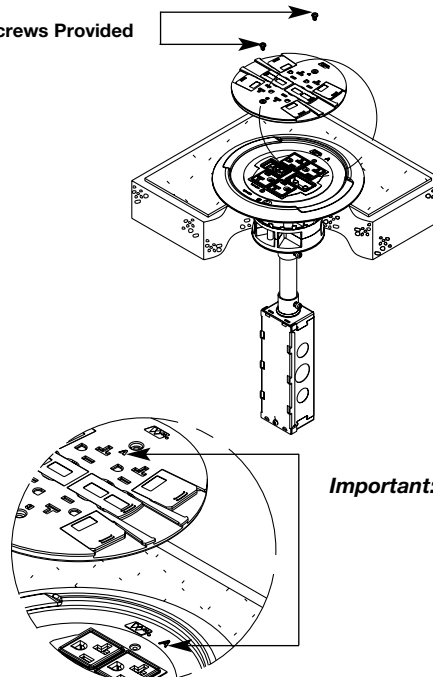
**Step 7.** Place gasket support on receptacle bracket. Place internal gasket on gasket support and press around edge to seat the gasket into the groove in the trim ring.

**CAUTION:** Gasket must be set in place to provide scrub water seal.



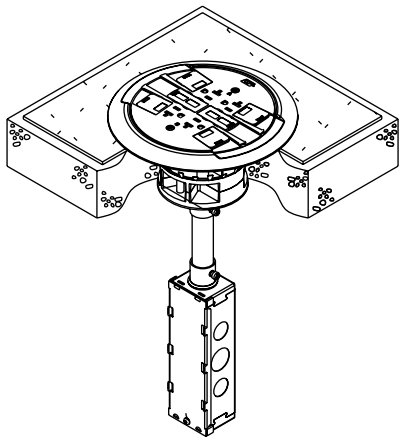
**Step 8.** Place slide holder on assembly, lining up the "A" and "B" indicators on the trim ring and the slide holder. Fasten with two screws provided.

Two Screws Provided



**Important:** Letter indicators need to be lined up for correct circuit identification.

**Step 9.** Make electrical connections in junction box according to wiring diagram.



**NOTE:** Factory supplied junction box shown. Junction boxes must be located in an accessible location. Poke-Thru devices with an “LJB” or “LJB25” suffix are supplied without a junction box (supplied by others).

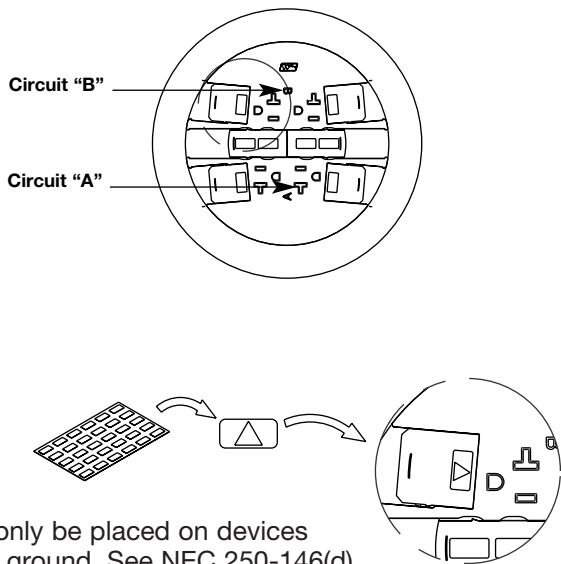
**Step 10.** Wiring Diagram. Connect receptacle leads to branch circuit conductors as required.

Electrical Wiring Chart		
	Circuit “A”	Circuit “B”
Line	Black	Red
Neutral	White	White w/Blue Stripe
Ground	Green	Green w/Yellow Stripe

**WARNING:** Ground wire from junction box must be connected to SYSTEM GROUND.

**CAUTION:** Receptacle mounting means not grounded. Grounding wire connection required. For isolated ground wiring, connect ground leads to a separate isolated grounding conductor See NEC250-146(d).

**Step 11.** If circuit is connected to an isolated ground, apply IG icon on receptacle slide as shown.



**NOTE:** The orange triangle shall only be placed on devices that are wired for isolated ground. See NEC 250-146(d).

**The RC4TC Series Poke-Thru Device is UL Listed and Classified to U.S. and Canadian safety standards to the following conditions:**

The RC4STC Poke-Thru Stem with the RC4CTC Service Head Fitting or the RC4KTC Conversion Kit Assembly, the RC4ATC factory assembled Poke-Thru device, and the RC4APTC Abandonment Fitting are for use with 1-, 1 1/2-, or 2-hour rated unprotected reinforced concrete floors and 1-, 1 1/2-, or 2-hour rated floors employing unprotected steel floor units and concrete topping (D900 Series Designs), or concrete floors with suspended ceilings. (Fire resistive designs with suspended ceilings should have provisions for accessibility in the ceiling area below the poke-thru fittings).

The assembled Poke-Thru stem and service fitting or the abandonment fittings will not reduce the ratings of the floor assembly when the thickness and type of concrete (required for the specific rating) are within the specified limits and the fittings are installed as specified:

- 1. Spacing** – Minimum of 2' [610mm] OC and not more than one unit per 65 sq. ft. [6 sq. m] of floor area in each span.
- 2. Concrete** – Minimum thickness of structural concrete topping of 2 1/4" [57mm] over metal deck or a minimum 3" [76mm] thick reinforced concrete slab. Unit weight of concrete to be 110 to 155 pcf.
- 3. Installation** – Mounted in a 4" diameter core-drilled hole in concrete per installation instructions accompanying the fittings or abandonment fittings. For use with power circuits, data and/or telephone cables as tabulated below:

POKE-THRU FITTING TYPE	SERVICE FITTING TYPE	POWER CONDUCTORS (A)	COMMUNICATION CONDUCTORS (B)
RC4ATC	–	6 (.03072 sq in.) [19.8205mm <sup>2</sup> ]	32 (.01600 sq. in.) [10.323mm <sup>2</sup> ]
RC4STC	RC4CTC	6 (.03072 sq in.) [19.8205mm <sup>2</sup> ]	32 (.01600 sq. in.) [10.323mm <sup>2</sup> ]
RC4STC	RC4KTC	6 (.03072 sq in.) [19.8205mm <sup>2</sup> ]	32 (.01600 sq. in.) [10.323mm <sup>2</sup> ]

The "TC" suffix letters indicate that device may be installed on tile or carpet covered concrete floors. All catalog numbers may have an "RT" suffix to indicate units supplied with Ortronics, Inc. communication modules and accessories. The "LJB" suffix letters indicate units supplied without a junction box. The "25" suffix numbers indicate units supplied with 25 foot receptacle leads.

- (A) Maximum number of No. 12 AWG Type THHN conductors in power compartment of Poke-Thru fitting.
- (B) Maximum number of 22 AWG conductors in low voltage compartment of Poke-Thru fitting (4-pair cables have (8) conductors). When conductors larger than No. 22 AWG are used, the aggregate cross-sectional area of the copper conductors shall not exceed the aggregate cross-sectional area of the 22 AWG conductors permitted in the low voltage compartment.

Copper Cross Sectional Area of Commonly Used Conductors	
Size	Solid
#24	.00032 sq. in. [.20645mm <sup>2</sup> ]
#22	.00050 sq. in. [.32258mm <sup>2</sup> ]
#14	.00323 sq. in. [2.08386mm <sup>2</sup> ]
#12	.00512 sq. in. [3.30321mm <sup>2</sup> ]
#10	.00815 sq. in. [5.25805mm <sup>2</sup> ]
# 8	.01296 sq. in. [8.36127mm <sup>2</sup> ]

**NOTE:** Use above values for solid or stranded conductors.

**For use on carpet covered and tile floors up to 3/4" [19.1mm] thick.**

**CAUTION:** Receptacle supplied with this Poke-Thru is not suitable for direct field wiring. Contact manufacturer for replacement. Field modifications will void UL Listing and Classification. Replacement receptacle is limited to this manufacturers' Catalog No. RC4REC2 or RC4REC2-25.



**The Wiremold Company**

U.S. and International:  
60 Woodlawn Street • West Hartford, CT 06110  
1-800-621-0049 • FAX 860-232-2062 • Outside U.S.: 860-233-6251  
Canada:  
850 Gartshore Street • Fergus, Ontario N1M 2W8  
1-800-741-7957 • FAX 519-843-5980

