

Condulet conduit outlet bodies, covers and gaskets – stainless steel

Condulet stainless steel fittings deliver power where you need it, saving you time and money throughout the life of your facility.

Superior resistance to corrosion and heat, combined with unmatched strength, make stainless steel Condulet bodies and boxes a long-term solution for even the most extreme environments.

Applications:

Conduit outlet bodies are installed in conduit systems to:

- Act as pull outlets for conductors being installed
- Provide openings for making splices and taps in conductors
- Act as mounting outlets for lighting fixtures and wiring devices
- Connect conduit sections
- Provide taps for branch conduit runs
- Make 90° bends in conduit runs
- Provide for access to conductors for maintenance and future system changes

Features:

- Self-healing properties of stainless steel fittings help reduce the penetration of rust/corrosion and eliminate damage to the fitting
- Stainless steel fittings retain their strength in extreme heat and extreme cold conditions
- Fitting surface is easy to maintain and keep clean
- Easy cleaning capabilities make these fittings perfect for food processing and other hygienic areas where wash downs are common
- Superior strength and durability greatly reduce replacement of fittings – this will lower your total cost of ownership and increase your return on investment
- Stainless steel fittings do not require harsh environment-damaging cleaners to keep them looking like new
- Conduit hubs have tapered threads and feature integral bushing for protection of wire insulation
- Outlet bodies designed to match conduit size for neat, compact installations

Certifications and compliances:

- UL standard: UL514A
- CSA standard: C22.2 No. 18.1-04
- Raintight – when installed with cover and gasket

Standard materials:

- Bodies and covers – 316 stainless steel
- Cover screws – 316 stainless steel
- Gasket – neoprene



| Dimension | |
|-----------|-------------------|
| A | Overall length |
| B | Overall height |
| C | Overall width |
| D | Width of opening |
| E | Length of opening |

Ordering information:

T shape – conduit body, cover and gasket



| Cat. # | Hub size | A | B | C | D | E |
|--------|----------|-------|------|------|------|-------|
| T18SS | 1/2" | 5.98 | 1.78 | 2.24 | 1.00 | 3.30 |
| T28SS | 3/4" | 6.69 | 2.01 | 2.46 | 1.25 | 3.93 |
| T38SS | 1" | 7.57 | 2.28 | 2.78 | 1.39 | 4.55 |
| T48SS | 1 1/4" | 8.82 | 2.31 | 3.19 | 1.77 | 5.29 |
| T58SS | 1 1/2" | 10.19 | 2.80 | 3.80 | 2.17 | 6.50 |
| T68SS | 2" | 12.36 | 3.56 | 4.93 | 3.02 | 8.54 |
| T88SS | 3" | 15.00 | 4.63 | 4.34 | 3.71 | 10.25 |
| T108SS | 4" | 18.25 | 5.44 | 5.50 | 4.87 | 13.00 |

LB shape – conduit body, cover and gasket



| Cat. # | Hub size | A | B | C | D | E |
|---------|----------|-------|------|------|------|-------|
| LB18SS | 1/2" | 5.13 | 2.28 | 1.45 | 1.00 | 3.28 |
| LB28SS | 3/4" | 5.80 | 2.54 | 1.62 | 1.25 | 3.93 |
| LB38SS | 1" | 6.60 | 2.90 | 1.85 | 1.38 | 4.55 |
| LB48SS | 1 1/4" | 7.75 | 3.31 | 2.24 | 1.77 | 5.29 |
| LB58SS | 1 1/2" | 9.06 | 3.68 | 2.81 | 2.17 | 6.50 |
| LB68SS | 2" | 11.08 | 4.66 | 3.83 | 3.82 | 8.50 |
| LB88SS | 3" | 13.50 | 6.13 | 4.34 | 3.71 | 10.25 |
| LB108SS | 4" | 16.63 | 7.25 | 5.50 | 4.87 | 13.00 |

TB shape – conduit body, cover and gasket



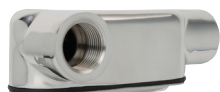
| Cat. # | Hub size | A | B | C | D | E |
|--------|----------|-------|------|------|------|------|
| TB28SS | 3/4" | 6.61 | 2.88 | 1.63 | 1.27 | 3.95 |
| TB38SS | 1" | 7.53 | 3.23 | 1.78 | 1.42 | 4.61 |
| TB48SS | 1 1/4" | 8.75 | 3.50 | 2.25 | 1.83 | 5.50 |
| TB58SS | 1 1/2" | 9.37 | 3.75 | 2.47 | 2.03 | 6.12 |
| TB68SS | 2" | 11.50 | 4.38 | 3.13 | 2.50 | 8.00 |

C shape – conduit body, cover and gasket



| Cat. # | Hub size | A | B | C | D | E |
|--------|----------|------|------|------|------|------|
| C18SS | 1/2" | 5.98 | 1.46 | 1.45 | 1.00 | 3.28 |
| C28SS | 3/4" | 6.69 | 1.71 | 1.65 | 1.25 | 3.93 |
| C38SS | 1" | 7.50 | 2.00 | 1.78 | 1.42 | 4.61 |

LL shape – conduit body, cover and gasket



| Cat. # | Hub size | A | B | C | D | E |
|--------|----------|------|------|------|------|------|
| LL28SS | 3/4" | 5.80 | 1.71 | 2.46 | 1.25 | 3.93 |
| LL38SS | 1" | 6.59 | 2.00 | 1.78 | 1.42 | 4.61 |

LR shape – conduit body, cover and gasket



| Cat. # | Hub size | A | B | C | D | E |
|--------|----------|------|------|------|------|------|
| LR28SS | 3/4" | 5.80 | 1.71 | 2.46 | 1.25 | 3.93 |
| LR38SS | 1" | 6.59 | 2.00 | 1.78 | 1.42 | 4.61 |