

Product data sheet

Specifications



Meter mains, QO, CSED, ringless socket, 150A, surface mount, maximum 8 spaces, 16 circuits, no bypass

QC816F150C

Product availability: Stock - Normally stocked in distribution facility

Main

Product or Component Type	Meter Mains
Range of Product	QO

Complementary

Line Rated Current	150 A
Short-circuit current	22 kA
Network number of phases	1
Meter socket type	Ringless
Mounting	Surface
Number of spaces	8
Number of circuits	16
Number of Tandem Breakers	8
Hub type	A
Electrical connection	Feed-thru lugs, line side Feed-thru lugs, service ground
Wire Size	AWG 6...350 kcmil aluminium/copper)line side AWG 12...AWG 2/0 aluminium/copper)service ground
Tightening torque	Main lugs 250 lb.in, AWG 6...350 kcmil, aluminium/copper Service ground 50 lb.in, AWG 14...AWG 2/0, copper Service ground 50 lb.in, AWG 12...AWG 2/0, aluminium Branch lugs 35 lb.in, AWG 6...AWG 4, aluminium/copper Branch lugs 25 lb.in, AWG 8, aluminium/copper Branch lugs 20 lb.in, AWG 14...AWG 10, copper Branch lugs 20 lb.in, AWG 12...AWG 10, aluminium Cover 10 lb.in
Disconnect	Service disconnect (factory installed)
Main Breaker Rating	150 A
Branch Breaker Rating	150 A
Service feed location	OH UG
Bypass type	No bypass
Height	35.15 in (892.81 mm)
Width	14.37 in (365.00 mm)
Depth	5.07 in (128.78 mm)
Bus Rating	200.0 A

Price is "List Price" and may be subject to a trade discount – check with your local distributor or retailer for actual price.

Disclaimer: This documentation is not intended as a substitute for and is not to be used for determining suitability or reliability of these products for specific user applications

Environment

Product certifications	UL E-6294
------------------------	-----------

Ordering and shipping details

Category	US1DE3A00022
Discount Schedule	DE3A
GTIN	785901001058
Returnability	Yes
Country of origin	MX

Packing Units

Unit Type of Package 1	PCE
Nbr. of units in pkg.	1
Package 1 Height	5.900 in (14.986 cm)
Package 1 Width	15.0 in (38.1 cm)
Package 1 Length	36.400 in (92.456 cm)
Package weight(Lbs)	43.041 lb(US) (19.523 kg)

Contractual warranty

Warranty	18 months
----------	-----------

Environmental Data

Schneider Electric aims to achieve Net Zero status by 2050 through supply chain partnerships, lower impact materials, and circularity via our ongoing “Use Better, Use Longer, Use Again” campaign to extend product lifetimes and recyclability.

[Environmental Data explained >](#)

[How we assess product sustainability >](#)

Environmental footprint	
Carbon footprint (kg CO2 eq, Total Life cycle)	400
Environmental Disclosure	Product Environmental Profile

Use Better

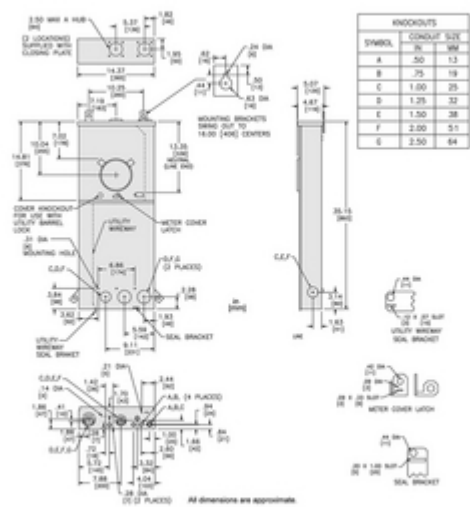
Materials and Substances	
Packaging made with recycled cardboard	No
Packaging without single use plastic	No
EU RoHS Directive	Compliant with Exemptions
REACH Regulation	REACH Declaration
California proposition 65	WARNING: This product can expose you to chemicals including: Lead and lead compounds, which is known to the State of California to cause cancer and birth defects or other reproductive harm. For more information go to www.P65Warnings.ca.gov

Use Again

Repack and remanufacture	
Circularity Profile	No need of specific recycling operations
Take-back	No

Technical Illustration

Dimensions



Technical Illustration

Wiring diagram

