

Product data sheet

Specifications



Safety switch, double throw, non fusible, 3 pole, 3 wire, 240VAC, 250VDC, 600A, Type 1

DTU326

Product availability: Stock - Normally stocked in distribution facility

Main

Product	Double Throw Safety Switch
Duty Rating	General duty
Disconnect Type	Non-fusible disconnect switch
Factory Installed Neutral	None
Number of Poles	3
Current Rating	600 A
Voltage Rating	240 V AC 250 V DC
Enclosure Rating	NEMA 1
Motor power hp	125 hp at 240 V AC 50-60 Hz for 3 phase motors 50 hp at 250 V DC

Complementary

Short-circuit current	10 kA H or K 200 kA R, J or T
Fuse type	H or K R, J or T
Mounting Type	Surface
Wire Size	250...500 kcmil copper or aluminium
Tightening torque	200 lbf.in (22.6 N.m) 275 lbf.in (31.07 N.m) 375 lbf.in (42.4 N.m) 500 lbf.in (56.5 N.m) (250...500 kcmil)
Depth	8.88 in (225.55 mm)
Width	24.46 in (621.28 mm)
Height	63.31 in (1608.07 mm)
Net Weight	170.0 lb(US) (77.1 kg)

Environment

Certifications	UL Listed
----------------	-----------

Ordering and shipping details

Category	US10DE100160
Discount Schedule	0DE1
GTIN	785901430063

Price is "List Price" and may be subject to a trade discount – check with your local distributor or retailer for actual price.

Disclaimer: This documentation is not intended as a substitute for and is not to be used for determining suitability or reliability of these products for specific user applications

Returnability	Yes
Country of origin	US

Packing Units

Unit Type of Package 1	PCE
Nbr. of units in pkg.	1
Package 1 Height	17.008 in (43.2 cm)
Package 1 Width	36.0 in (91.4 cm)
Package 1 Length	66.0 in (167.6 cm)
Package weight(Lbs)	180.0010 lb(US) (81.647 kg)

Contractual warranty

Warranty	18 months
----------	-----------

Environmental Data

Schneider Electric aims to achieve Net Zero status by 2050 through supply chain partnerships, lower impact materials, and circularity via our ongoing “Use Better, Use Longer, Use Again” campaign to extend product lifetimes and recyclability.

[Environmental Data explained >](#)

[How we assess product sustainability >](#)

Environmental footprint	
Carbon footprint (kg CO2 eq, Total Life cycle)	2053
Environmental Disclosure	Product Environmental Profile

Use Better

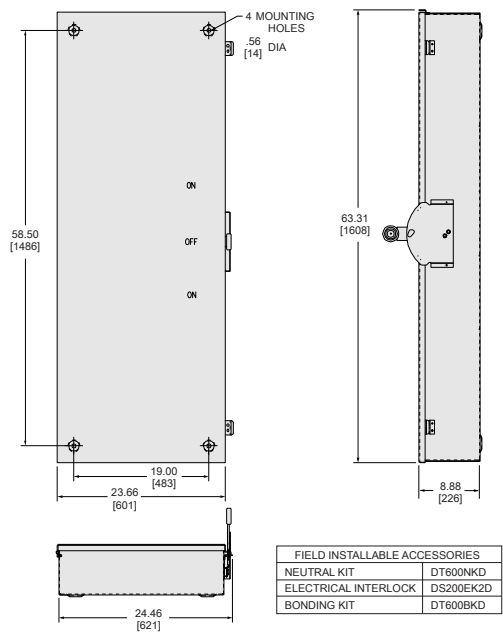
Materials and Substances	
Packaging made with recycled cardboard	Yes
Packaging without single use plastic	Yes
EU RoHS Directive	Compliant
REACH Regulation	REACH Declaration
California proposition 65	WARNING: This product can expose you to chemicals including: Lead and lead compounds, which is known to the State of California to cause cancer and birth defects or other reproductive harm. For more information go to www.P65Warnings.ca.gov
Halogen content performance	Halogen free plastic parts product
PVC free	Yes

Use Again

Repack and remanufacture	
Circularity Profile	No need of specific recycling operations
Take-back	No

Technical Illustration

Dimensions



NEMA TYPE 1
DS468GKD EQUIPMENT GROUND SUPPLIED BY FACTORY.
ALL DIMENSIONS ARE APPROXIMATE.
REFER TO TECHNICAL DRAWINGS AND DOCUMENTATION FOR COMPLETE INFORMATION.

Technical Illustration

Wiring diagram

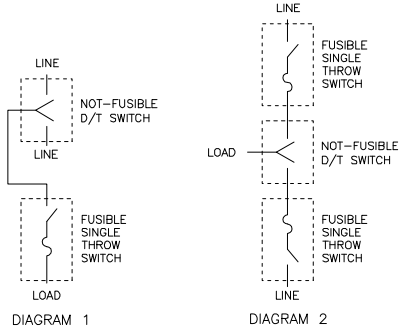
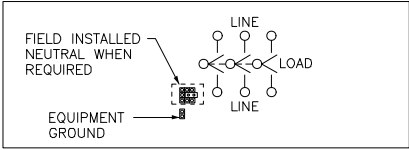


DIAGRAM 1 AND 2 ILLUSTRATE METHODS OF APPLYING FUSES TO DOUBLE THROW SWITCHES WHEN REQUIRED.