

Floor Boxes

SystemOne Recessed 10 Gang Floor Box

For Use In Concrete Floors



Features

- Designed for applications requiring up to 2 in. conduits
- Stamped steel construction, exterior coated with fusion bonded epoxy paint for on grade use
- Pre and post pour adjustment
- Patent pending, labor saving, easy mount device plates
- Rectangular covers

Ordering Information

- A ½ in. yellow plastic cover insert is included and allows for easy use in tile, finished concrete or other mediums
- 6 inch solid conductor ground pigtail in each gang

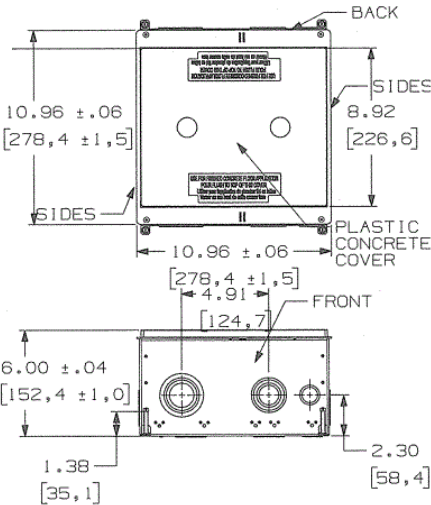
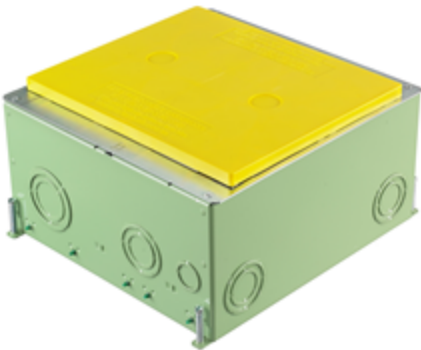
| | | | |
|------------------------------|--|------------------------------|----------------------|
| Catalog Number CFB10G55CR | UPC Number 783585447414 | Cover Series 610Gxx | Box Type On Grade |
| Device Volume 25 cu in. | Depth Behind Mounting Plate 2 1/2 in. | Min. Pour Depth 5 1/2 in. | |

Specifications

| | |
|--|---------------------------|
| Box Material | 16 gauge galvanized steel |
| Access Cover Material (ordered separately) | Die cast aluminum |
| Plastic Concrete Cover | Polypropolyne - yellow |

Required

- Cover
- Surface Style Rectangular Covers (for use with carpet, tile, VCT and other engineered floors) [Click here](#)
 - Flush Style Rectangular Covers (for use with tile, finished concrete and Terrazzo floors) [Click here](#)



Online Resources

- Customer Use Drawing
- eCatalog
- Installation Instructions

