

Floor Boxes

SystemOne Recessed 2 Gang Floor Box

For Use In Concrete Floors

Features

- Designed for applications requiring up to 2 in. conduits (with use of CFBHUB2 purchased separately)
- Stamped steel construction
- Pre and post pour adjustment
- Patent pending, labor saving, easy mount device plates
- Rectangular covers

Ordering Information

- A ½ in. yellow plastic cover insert is included and allows for easy use in tile, finished concrete or other mediums
- 6 inch solid conductor ground pigtail in each gang

|                             |  |                                |                         |
|-----------------------------|--|--------------------------------|-------------------------|
| Catalog Number<br>CFB2G30   | UPC Number<br>783585447117               | Cover Series<br>24Gxx / 2GFFxx | Box Type<br>Above Grade |
| Device Volume<br>35 cu. in. | Depth Behind Mounting Plate<br>2 1/2 in. | Min. Pour Depth<br>3 in.       |                         |

Specifications

|  |                           |
|--|---------------------------|
| Box Material                               | 16 gauge galvanized steel |
| Access Cover Material (ordered separately) | Die cast aluminum         |
| Plastic Concrete Cover                     | Polypropolyne - yellow    |

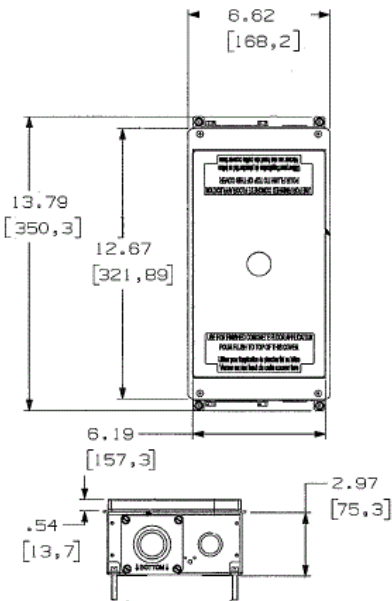
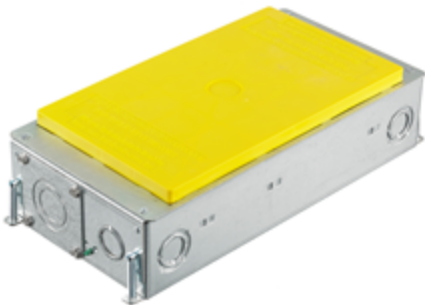
Required

- Cover
- Surface Style Rectangular Covers (for use with carpet, tile, VCT and other engineered floors) [Click here](#)
  - Flush Style Rectangular Covers (for use with tile, finished concrete and Terrazzo floors) [Click here](#)

Accessories

|  |           |
|--|-----------|
| 2 in. threaded zinc hub  | CFBHUB2   |
| Replacement knock-out plate  | CFBKOPATE |
| Replacement wire-way, used to pass wires from one compartment to the other | CFB2WW    |

HUBBELL



Online Resources

- Customer Use Drawing
- eCatalog
- Installation Instructions

