

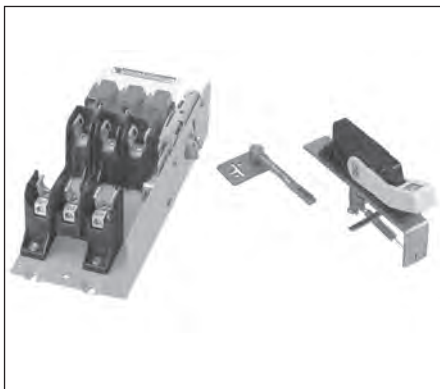
Disconnect Switches

Type VBII (30-600A) with Flange Mounted Operating Handle

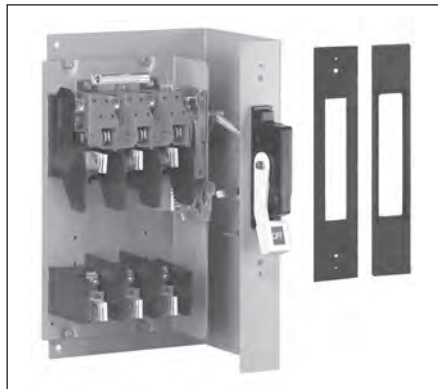
Features and Ordering Information

Features

- 30-600A, 600VAC and DC ratings
- 240 & 600V AC switches are CSA certified under file number 154852 and UL recognized under file E121152, Vol. 3.
- Visible blade quick make and break switching action
- Panel and Flange mounted assemblies facilitate installation
- Panel mounted switches are variable depth
- Short circuit rating of 10,000 AIC with class H fuse, and of 200,000 AIC with class R or J fuses.
- Flange mounted handles rated as Type 1, 3R & 12 or 4X are padlockable in the off position with up to (3) padlocks with 5/16 hasps
- Meets UL98 requirements and suitable for both main and branch circuit applications
- A complete line of aux contacts are available
- Load break and horsepower rated
- Defeatable cover interlock standard with all handles
- Meets NFPA79 requirements
- Seismic qualified — complies with the 2010 California Building Code (CBC) — and with the International Building Code (IBC) — Compliance Level SDS = 1.85 g



VBFS361, VBLK1 & VBH1



VBFS363F



VBNFS365, VBLK4 & VBH2

Ordering Information

1. Determine the ratings required (amps, volts, HP, Fusible, NF), the mounting needed (Panel or Flange), and select the appropriate switch.
2. For panel mounted switches with a rigid operating shaft (30-600A), order panel mounted switch, flange mounted operating handle & rigid linkage kit based on depth required.
3. For panel mounted switches with a Max-Flex operator, order panel mounted switch, Max-Flex Handle & Adapter Kit and drive cable.
4. Select accessories if required.

Disconnect Switches

Type VBII (30-600A) with Flange Mounted Operating Handle

Selection

1
DISCONNECT
SWITCHES

Switches—for Standard 600V Max AC or DC Applications

Switch Ampere Rating	Max. AC Voltage Rating	Catalogue Number	Horsepower Rating, Switches and 3-Phase ^④						600 Volts DC (max) ^④
			240 Volts AC		480 Volts AC		600 Volts AC		
			Standard	Max.	Standard	Max.	Standard	Max.	

Fusible Panel Mounted Variable Depth Switches - 3-Pole^③

30	240	VBFS321	3	7 ^{1/2}	—	—	—	—	— ^①
60	240	VBFS322	7 ^{1/2}	15	—	—	—	—	— ^②
30	600	VBFS361	—	—	5	15	7 ^{1/2}	20	15 ^③
60	600	VBFS362	—	—	15	30	15	50	30 ^③
100	600	VBFS363	—	—	25	60	30	75	50 ^③
200	600	VBFS364	—	—	50	125	60	150	50 ^③
400	600	VBFS365	—	—	100	250	125	350	— ^⑦
600	600	VBFS366	—	—	150	400	200	500	— ^⑦

Non-fusible Panel Mounted Variable Depth Switches - 3-Pole^③

30	600	VBNFS361	—	10	—	20	—	30	15 ^③
60	600	VBNFS362	—	20	—	50	—	60	30 ^③
100	600	VBNFS363	—	40	—	75	—	100	50 ^③
200	600	VBNFS364	—	60	—	125	—	150	50 ^③
400	600	VBNFS365	—	125	—	250	—	300	— ^⑦
600	600	VBNFS366	—	200	—	400	—	500	— ^⑦

Fusible Flange Mounted Switches - 3-Pole^③

30	240	VBFS321F	3	7 ^{1/2}	—	—	—	—	— ^①
60	240	VBFS322F	7 ^{1/2}	15	—	—	—	—	— ^②
30	600	VBFS361F	—	—	5	15	7 ^{1/2}	20	15 ^③
60	600	VBFS362F	—	—	15	30	15	50	30 ^③
100	600	VBFS363F	—	—	50	60	30	75	50 ^③
200	600	VBFS364F	—	—	100	125	60	150	50 ^③

Non-fusible Flange Mounted Switches - 3-Pole^③

30	600	VBNFS361F	—	10	—	20	—	30	15 ^③
60	600	VBNFS362F	—	20	—	50	—	60	30 ^③
100	600	VBNFS363F	—	40	—	75	—	100	50 ^③
200	600	VBNFS364F	—	60	—	125	—	150	50 ^③

Note: Fusible switches include fuse provisions for Class H Fuses. The load base can be moved to pre-drilled holes for Class J Fuses on all 600V switches. If Class R Fuses are required, add a Class R Fuse Clip Kit.

Cable Kit

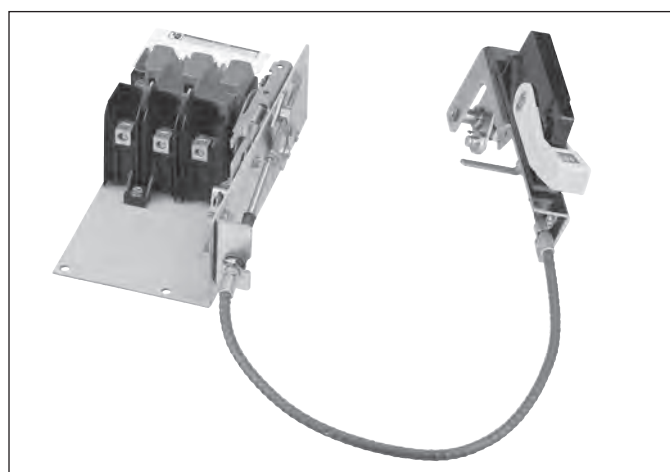
For use with 30-200A panel mounted switches and Max-Flex handle and adapter kit.

Catalogue Number	Description
FHOEC036	36" long drive cable
FHOEC048	48" long drive cable

Max-Flex™ Handle and Adapter Kit

(Type 1, 12, 3R & 4X) Use with 30-200A panel mounted switches and cable kit.

Catalogue Number	Description
VBHM1	30-200A Max-Flex Adapter Kit



VBNFS361, VBHM1 & FHOEC036

① Rated 5 HP at 250V DC.

② Rated 10 HP at 250V DC.

③ 600V DC & 600V DC horsepower rating shown requires (2) poles to be connected in series.

④ Std. - applies when non-time delay fuses are used.
Max. - applies when time delay fuses are used.

⑤ Includes line base, load base, operating mechanism and line and load lugs. Order operating handle and linkage kits from tables on pages 1-42 or 1-40.

⑥ Includes line base, load base, operating mechanism line and load lugs plastic operating handle and required linkage.

⑦ Rated 250V DC max and 50HP at 250V DC.

Disconnect Switches

Type VBII (30-600A) with Flange Mounted Operating Handle

Selection & Accessories

Flange Mounted Operating Handles

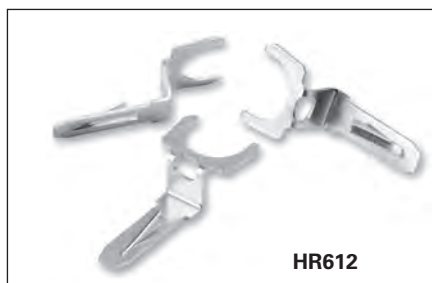
For use with Panel Mounted Switches. Plastic handle is included with Flange Mounted Switches as standard.

Catalogue Number	Operating Handle Description
Plastic Handles	
VBH1	30-200A Type 1, 3R & 12
VBH14X	30-200A Type 4X
Metal Handles	
VBH112	30-200A Type 1, 3R & 12
VBH14	30-200A Type 4X
VBH2	400A Type 1 & 12
VBH2R	400 & 600A Type 1, 3R & 12
VBH24X	400 & 600A Type 4X

Rigid Linkage Kits

For use with Panel Mounted Switches. Not required for Flange Mounted Switches.

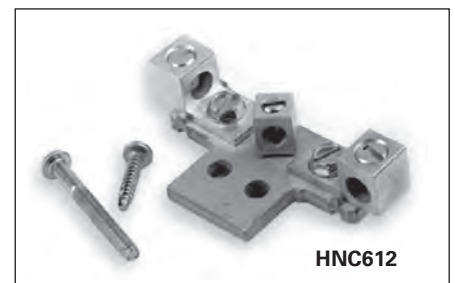
Catalogue Number	Switch Ampere Rating	Enclosure Depth ^① - Inches (mm)	
		Min.	Max.
VBK1	30-200	6.94 ^② (176)	6.94 ^② (176)
VBK2	30-200	6.94 ^② (176)	19.0 (483)
VBK3	400 & 600	9.00 (229)	8.75 (222)
VBK4	400 & 600	9.00 (229)	19.0 (483)



HR612



HT63



HNC612

Class R Fuse Clip Kits

These kits prevent the installation of Class H and K fuses (one kit required per switch).

Class R Fuse Clip Kits

Catalogue Number	Description
HR21	30A, 240V Kit (HD only)
HR612	30A, 600V Kit/60A, 240V Kit
HR62	60A, 600V Kit
HR63	100A Kit
HR64	200A Kit
HR656	400A/600A Kit

Internal Door Latch Kits

For use with enclosures with door mounted latching bar. Required when a flange mounted switch is mounted in a Hoffmann or Rittal enclosure provided with an AB cutout.

Catalogue Number	Description
DKR2	2 point (for use with enclosures less than 40" high)
DKR3	3 point (for use with enclosures 40" or larger in height)

Class T Fuse Adapter Kits

100-600A fusible switches are field convertible to accept Class T fuses. 400-600A switches are field convertible to accept Class T fuses by moving the load base to a pre-drilled T fuse position.

Class T Fuse Adapter Kits^③

Catalogue Number	Description
HT23	100A, 240V Kit
HT63	100A, 600V Kit
HT24	200A, 240V Kit
HT64	200A, 600V Kit

Class J Fuse Provisions

All 30-600A, 600V fusible switches are field convertible to accept Class J fuses by moving the load base to a pre-drilled J fuse position.

Window Kits (Type 1, 12, 3R and 4x)

Allows viewing of visible blades and of indicating fuses through 200A.

Catalogue Number	Description
VBWK1	30A Window Kit
VBWK2	60 & 100A Window Kit
VBWK3	200-600A Window Kit

Neutral Kits^④

Standard Neutral Kits can be field installed in 30-100A switches.

Neutral Kits

Switch Ampere Rating	Kit Catalog Number
30A 600V, 60A 240V	HNC612
60A, 600V & 100A	HNC623

200% Neutral Kits

CSA certified 200% Neutrals are available on 60 & 100A switches. They are typically used with non-linear transformers or where increased neutral ampacity/lug capacity is required.

200% Neutral Kits

Switch Ampere Rating	Kit Catalogue Number	Wire Range Line & Load Lugs (Cu/Al)
60 & 100A	HNC263	(2) #14-1/0 AWG

① Dimensions (min. & max.) from enclosure mounting pan to outside surface of enclosure handle mounting flange.

② 7.12 for 200A switches.

③ One kit per pole required.

Disconnect Switches

Type VBII (30-600A) with Flange Mounted Operating Handle

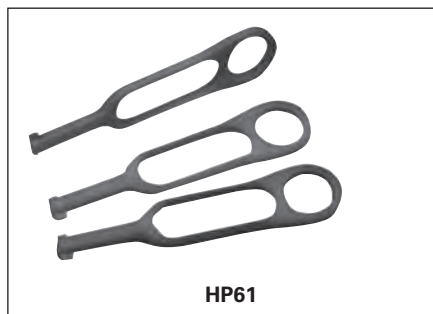
Accessories



HA161234



HA261234



HP61



HLC612

Auxiliary Contacts

The auxiliary contacts are available in 1 normally open and 1 normally closed or 2 normally open and 2 normally closed configurations. Siemens offers a PLC Auxiliary Switch (30-200A) that has very low resistance for low voltage and current typical in PLC circuits. All auxiliary contacts make after and break before main switch contacts.

Switch Ampere Rating	Aux. Switch Catalogue Number	Kit Ampere Rating			Kit Horsepower Rating		
		125V AC Max.	250V AC Max.	28V DC Max.	125V AC Max.	250V AC Max.	28V DC Max.

With 1 NO & 1 NC Isolated Contacts

30-200	HA161234	10	10	—	1/2	3/4	—
400-600	HA165678	10	10	—	1/2	3/4	—

With 2 NO & 2 NC Isolated Contacts

30-200	HA261234	10	10	7	1/2	3/4	—
400-600	HA265678	10	10	7	1/2	3/4	—

Low Current PLC Type with 1 NO & 1 NC Gold Plated Contacts

30-200	HA361234	10	10	—	1/2	3/4	—
400-600	HA365678	10	10	—	1/2	3/4	—

Fuse Puller Kits

Fuse Puller Kits are field installable in 30-100A Type VBII Heavy Duty Switches (one kit required per 3-pole switch).

Switch Ampere Rating	Fuse Puller Kit Catalogue Number
30	HP61
60	HP62
100	HP63

Copper Lug Kits

All switches are CSA approved to accept field installed copper lug kits.

Switch Ampere Rating	Copper Lug Catalogue Number	Description
30-60	HLC612	(9) Lugs/Kit #14-4 AWG Cu
100	HLC63	(9) Lugs/Kit #14-1/0 AWG Cu
200	HLC64	(9) Lugs/Kit #6 AWG-300 Kcmil Cu
400-600A	HLC65678	(1) Lugs/Kit #1/0 AWG-600 Kcmil Cu

Equipment Ground Kits

Equipment Ground Lug Kits are available for all switches.

Switch Ampere Rating	Catalogue Number	Number of Terminals	Wire Range Per Terminal (Cu/Al)
30-200	HG61234	2	#14-4 AWG
400 & 600	HG656	4	#6 AWG-250 Kcmil

NEW Internal Shield Kits (for fusible switches)

Kits provide a "skirt" that encloses the VBII switch and also a clear plastic inner door to prevent accidental contact with live parts. Test probe holes are provided and fuses can be replaced without removal of kit.

Switch Ampere Rating	Shield Kit Catalogue Number
30A	HSK61
60-100A	HSK623
200A	HSK64

Disconnect Switches

Type VBII (30-600A) with Flange Mounted Operating Handle

Lug Wire Ranges & Dimensions

Lugs

30 & 60A switches are suitable for use with 60° or 75°C wire. 100–600A switches are suitable for use with 75°C rated wire. All switches are supplied with factory installed line and load lugs.

Wire Ranges

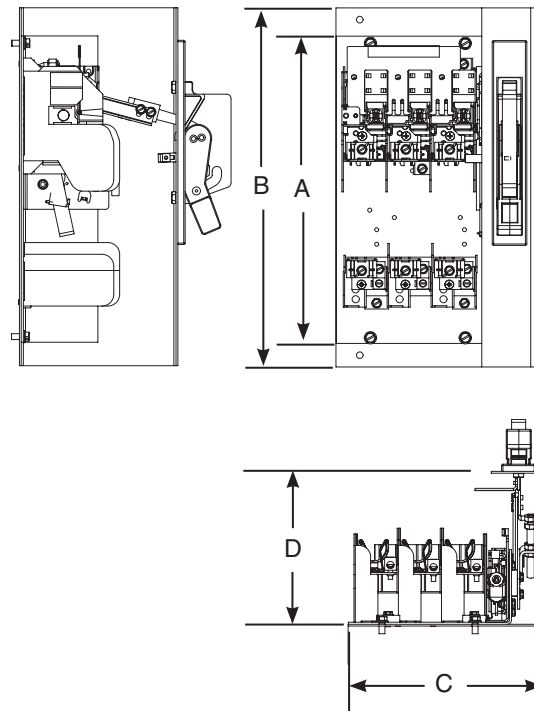
(Line, Load and Standard Neutral)

Switch Ampere Rating	Lug Wire Range
30	#14-2 AWG (Cu/Al)
60	#14-2 AWG (Cu/Al)
100	#14-1/0 AWG (Cu/Al)
200	#6 AWG-300 Kcmil (Cu/Al)
400	(1) 1/0 AWG-750 Kcmil (Cu/Al) or (2) 1/0 AWG-250 Kcmil (Cu/Al)
600	(2) 1/0 AWG-750 Kcmil (Cu/Al) or (4) 1/0 AWG-250 Kcmil (Cu/Al)

Approximate Dimensions

Mounting bracket shown with handle installed is supplied with Flange Mounted Switches only. All Panel Mounted Switches have a “L” shaped mounting pan with a line base, load base (if fusible) and mechanism installed.

Catalogue Number	Dimensions - Inches (mm)				
	A	B	C ^①	D (min)	D (max)
Fusible, Panel Mounted					
VBFS321	11.88 (302)	N/A	7.47 (189)	6.94 (176)	19 (483)
VBFS322	13.12 (333)	N/A	8.50 (216)	6.94 (176)	19 (483)
VBFS361	11.88 (302)	N/A	7.47 (189)	6.94 (176)	19 (483)
VBFS362	13.12 (333)	N/A	8.50 (216)	6.94 (176)	19 (483)
VBFS363	13.12 (333)	N/A	8.50 (216)	6.94 (176)	19 (483)
VBFS364	17 (432)	N/A	12.33 (313)	7.12 (181)	19 (483)
VBFS365	26.25 (667)	N/A	16.50 (419)	8.63 (219)	19 (483)
VBFS366	26.25 (667)	N/A	16.50 (419)	8.63 (219)	19 (483)
Non-fusible, Panel Mounted					
VBNFS361	9.79 (249)	N/A	7.47 (189)	6.94 (176)	19 (483)
VBNFS362	9.79 (249)	N/A	8.50 (216)	6.94 (176)	19 (483)
VBNFS363	9.79 (249)	N/A	8.50 (216)	6.94 (176)	19 (483)
VBNFS364	10.77 (274)	N/A	12.33 (313)	7.12 (181)	19 (483)
VBNFS365	13 (330)	N/A	16.50 (419)	8.63 (219)	19 (483)
VBNFS366	13 (330)	N/A	16.50 (419)	8.63 (219)	19 (483)
Fusible, Flange Mounted					
VBFS321F	11.88 (302)	14.08 (358)	7.47 (189)	7.27 (185)	N/A
VBFS322F	13.12 (333)	15.83 (402)	8.85 (225)	7.27 (185)	N/A
VBFS361F	11.88 (302)	14.08 (358)	7.47 (189)	7.27 (185)	N/A
VBFS362F	13.12 (333)	15.83 (402)	8.85 (225)	7.27 (185)	N/A
VBFS363F	13.12 (333)	15.83 (402)	8.85 (225)	7.27 (185)	N/A
VBFS364F	17 (432)	18.20 (462)	12.68 (322)	7.57 (192)	N/A
Non-fusible, Flange Mounted					
VBNFS361F	9.79 (249)	11.78 (299)	7.47 (189)	7.27 (185)	N/A
VBNFS362F	9.79 (249)	11.78 (299)	8.85 (225)	7.27 (185)	N/A
VBNFS363F	9.79 (249)	11.78 (299)	8.85 (225)	7.27 (185)	N/A
VBNFS364F	10.77 (274)	11.97 (304)	12.68 (322)	7.57 (192)	N/A



① Dimension C for panel mounted switches indicates the minimum width from the left hand edge of the switch mounting pan to the right hand inside surface of the enclosure.