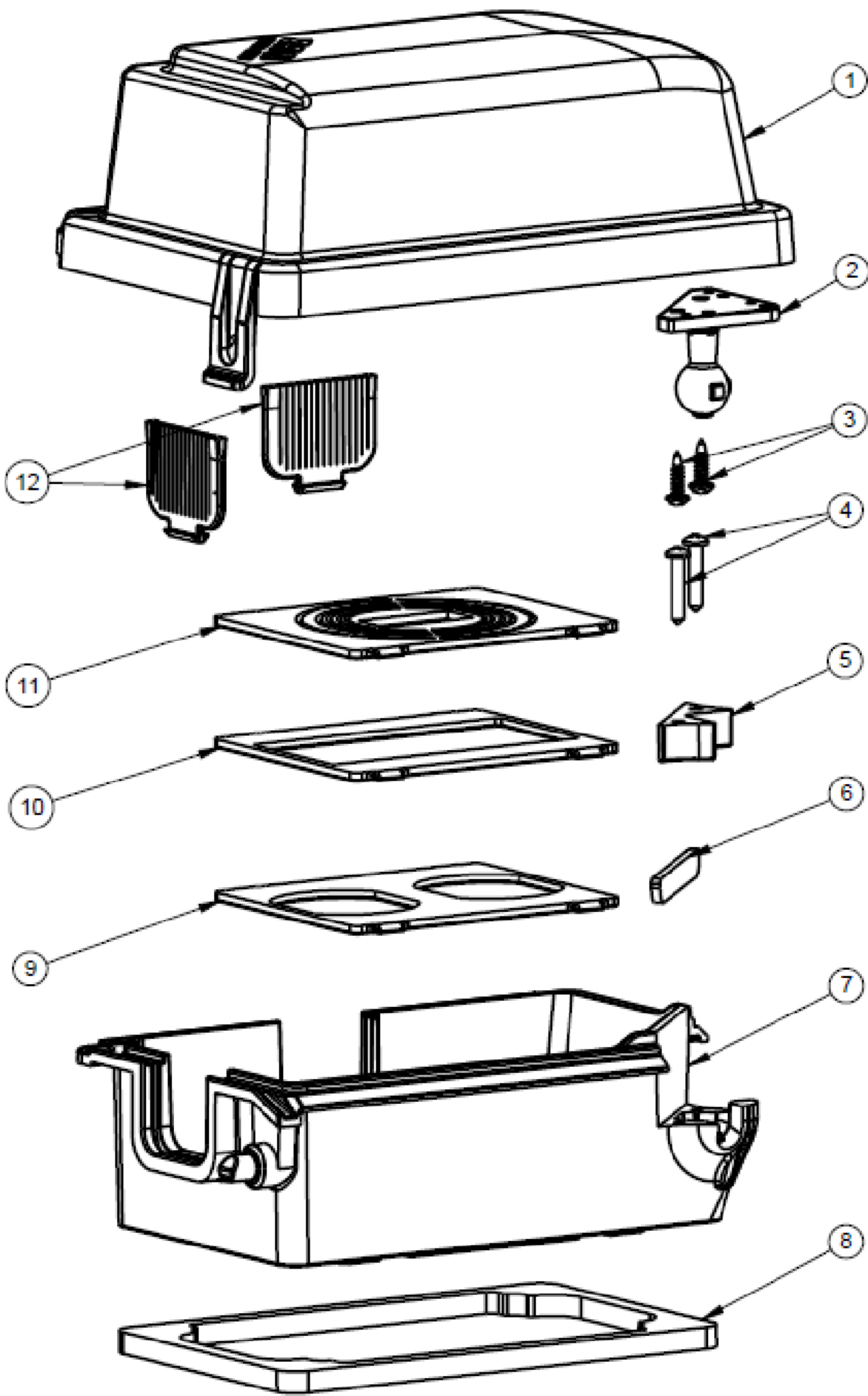


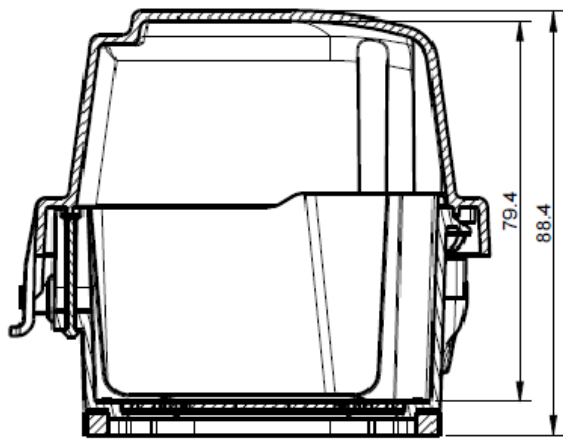
ZONE	NO.	DESCRIPTION	DATE	APPRD.	LTR. NO.
	1	SUBMIT FOR RELEASE	5/7/2020	PW	
	2	UPDATED TO ADD cULus	3/29/21	PW	

SINGLE GANG EXTRA DUTY 3-1/8" DEEP NON-METALLIC WIU COVER

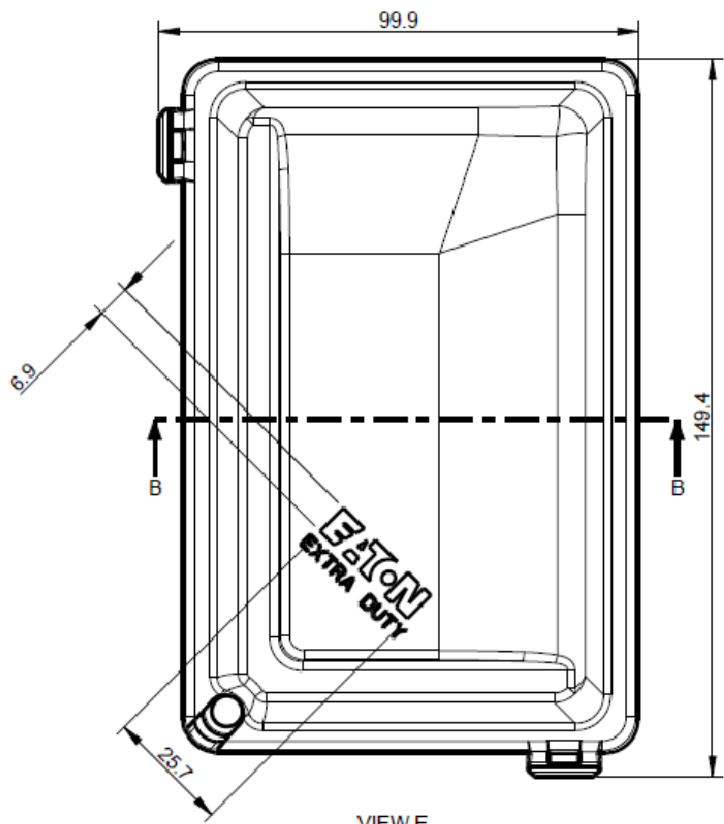
WIU1DT1	TRANSPARENT GREY
WIU1DG1	GREY
WIU1DW1	WHITE
WIU1DB1	BRONZE



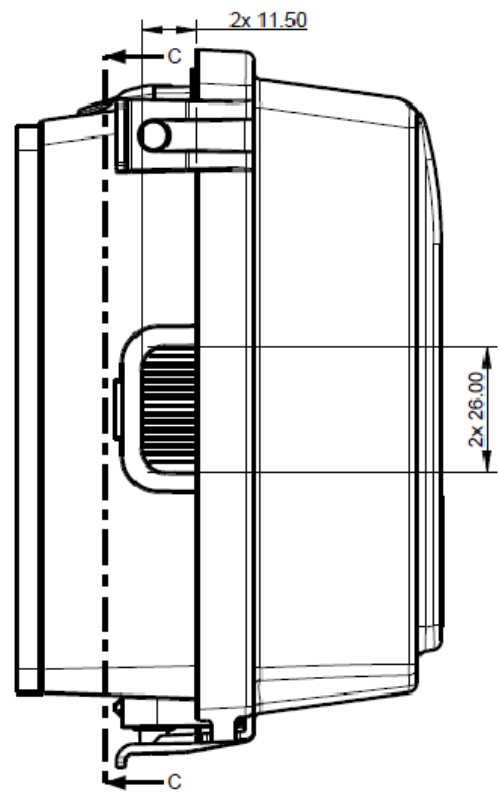
VIEW A



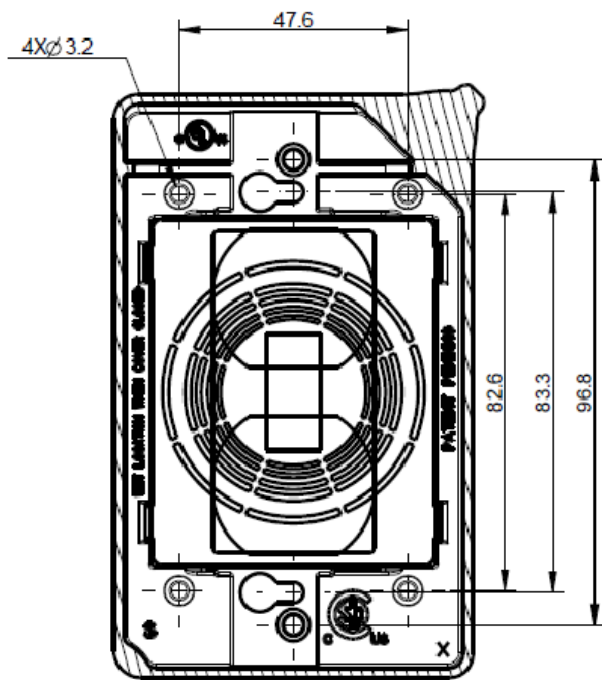
SECTION B-B
VIEW B



VIEW D



VIEW C


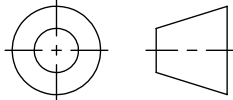


SECTION C-C
VIEW C

NOTES:

- CERTIFICATION/LISTING:   LISTED
- ENVIRONMENTAL RATING:
-WEATHERPROOF
-WET LOCATION
-NEMA 3R

SR. NO	DESCRIPTION	MATERIAL	QTY
1	LID DEEP	POLYCARBONATE	1
2	BALL	POLYCARBONATE	1
3	PCT 04-040SS	STEEL	2
4	PCT 04-062	STEEL	2
5	CAP	POLYCARBONATE	1
6	BALL JOINT GASKET	POLYTHELENE FOAM	1
7	BASE	POLYCARBONATE	1
8	BASE GASKET	POLYTHELENE FOAM	1
9	DUPLEX ADAPTER	POLYCARBONATE	1
10	GFCI ADAPTER	POLYCARBONATE	1
11	ROUND & SWITCH ADAPTER	POLYCARBONATE	1
12	EYELASH	ELASTOMER	2

THIS IS PROPERTY OF EATON AND CONTAINS CONFIDENTIAL AND TRADE SECRET INFORMATION. POSSESSION DOES NOT CONVEY ANY RIGHTS TO LOAN, SELL OR DISCLOSE SAID INFORMATION. REPRODUCTION OR USE FOR ANY PURPOSE OTHER THAN WHICH IT WAS SUPPLIED MAY NOT BE MADE WITHOUT EXPRESS WRITTEN PERMISSION OF EATON. THIS DRAWING IS ON LOAN AND IS TO BE RETURNED UPON REQUEST.		TOLERANCES UNLESS OTHERWISE SPECIFIED		UNLESS OTHERWISE SPECIFIED, ALL PRIMARY DIMENSIONS ARE IN INCHES. DIMENSIONS IN [] ARE IN MILLIMETERS.			
		.X ± .1 .XX ± .01 .XXX ± .005 ANGLES ± 1.5°	in. ± .3 ± .13 ± .000 ± 1.5°	mm ± .3 ± .13 ± .000 ± 1.5°	ORIGINAL DATE 05/4/2020		
MATERIAL:		DIM AND TOL IN ACCORDANCE WITH ASME Y14.5 2009.		REDRAWN DATE		TAK	
FINISH:		THIRD ANGLE PROJECTION		CHECKED BY			
NEXT ASSY.		USED ON		APPROVED BY			
APPLICATION				APPROVED BY			
				TITLE		WIU COVER, NON-METALLIC 1 GANG EXTRA DUTY 3-1/8" DEEP	
				FIRST MADE FOR		WEATHERPROOF	
				SIZE	CODE IDENT. NO.	WIU	REV. 2
				SCALE 1:1	WT.	SHEET 1 OF 1	