



Catalog Number: 6636-GSC1  
Item Description: N1 SCREW CVR GUTTER  
UPC Code: 784572107946

Brand Name: Milbank  
Type: Lay In Wireway  
Application: Wireway  
Standard: UL Listed, Type 1  
Cover Type: Screw Cover  
Enclosure: Indoor Enclosure  
Nominal Cross Section: 6x6  
Straight Section Length: 36  
Material: Steel with Powder Coat Finish  
Finish: ANSI 61 Gray  
Knockouts: True

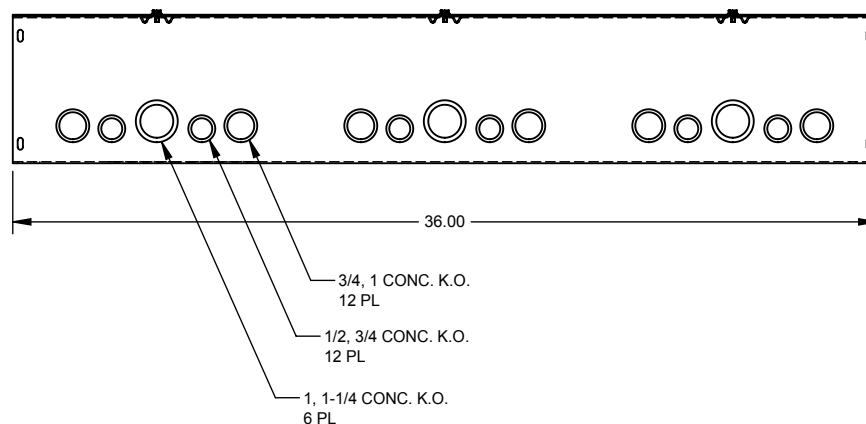
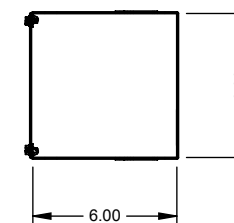
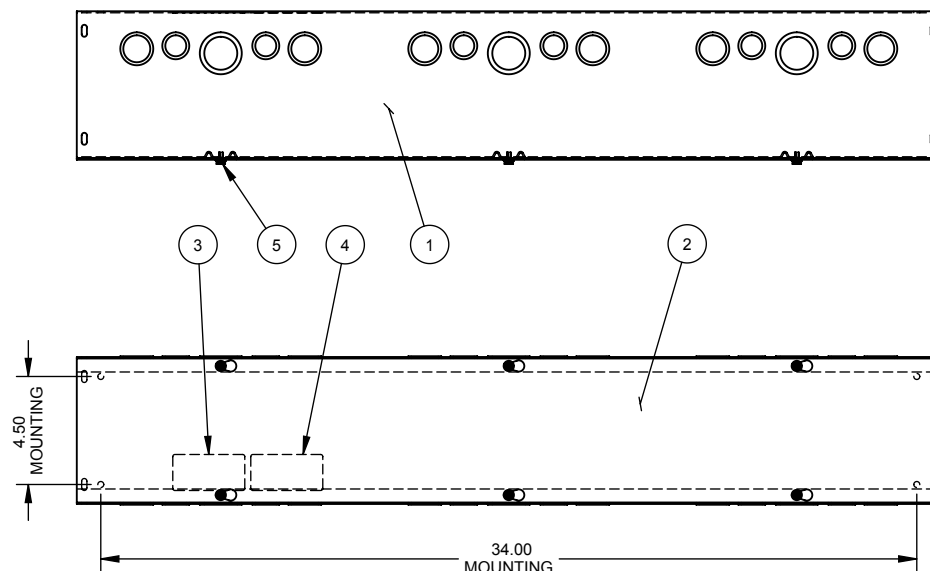
Additional Specifications: UL Listed:UL Listed  
NEMA Rating:Type 1



*Utility requirements may vary. Always consult the serving utility for their requirements prior to ordering or installing this equipment. This product must always be installed by a licensed electrician. Installation of this equipment may require local electrical inspector approval.*

CATALOG#	LABEL#
6636-GSC1-( )	1002943
RC-6636-GSC1-( )	1125051
SPS-663-( )	1132575

ITEM	QTY.	PART NUMBER	DESCRIPTION
1	1	(SEE CHART)	BACK
2	1	(SEE CHART)	PLATE/COVER
3	1	(SEE CHART)	LABEL (U/L LISTING)
4	1	1002942	LABEL, RATING
5	6	1001290	SCREW, 10-32 X 5/16
6	2	1002880	BAG ASSY.


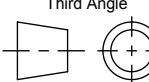


SUFFIX	BACK #	COVER #
-SU	1001338	1003288
-SUC	1128941	1128933
-SO	1128942	1011818
-SUNK	1001305	1003288
-NK	1010686	1011818
-SUNKC	1128943	1128933

SUFFIX	FINISH
NONE	PAINTED
-NP	NOT PAINTED

NOTE:  
1. PLACE BAG ASS'Y INSIDE ENCLOSURE. (NOT SHOWN)

REV	DATE	DESCRIPTION	BY
C	8-28-07	ADDED BACK & COVER CHART ECO. 15946	DL
C1	5/7/08	ADDED CHART & REMOVED NOTE#2 (ECO.17139)	JLT
D	6/3/09	1001290 QTY WAS 4; 1002880 QTY WAS 4 (ECO #18348)	D.F.

Material:	16 GA. - SEE CHART		
Shear/ Die#:			
Finish:	SEE CHART	General Offices: Kansas City, MO	
Part Wt.:		Title:	SCREW COVER WIREWAY 6 x 6 x 36, TYPE 1 NEMA ENCLOSURE
Tolerances: Unless Specified Otherwise X.X ±.1 X.XX ±.03 X.XXX ±.015 X" ±2"		Catalog No.:	(SEE CHART)
Third Angle 		Customer:	MILBANK STANDARD
Scale:	NTS	Drawing No.:	250
Drawn By:	DY	Date:	05/24/02
Checked By:		Sheet	1 of 1
Approved By:			